



# 48

## DUFOUR

CATAMARANS







## The essence of Dufour identity

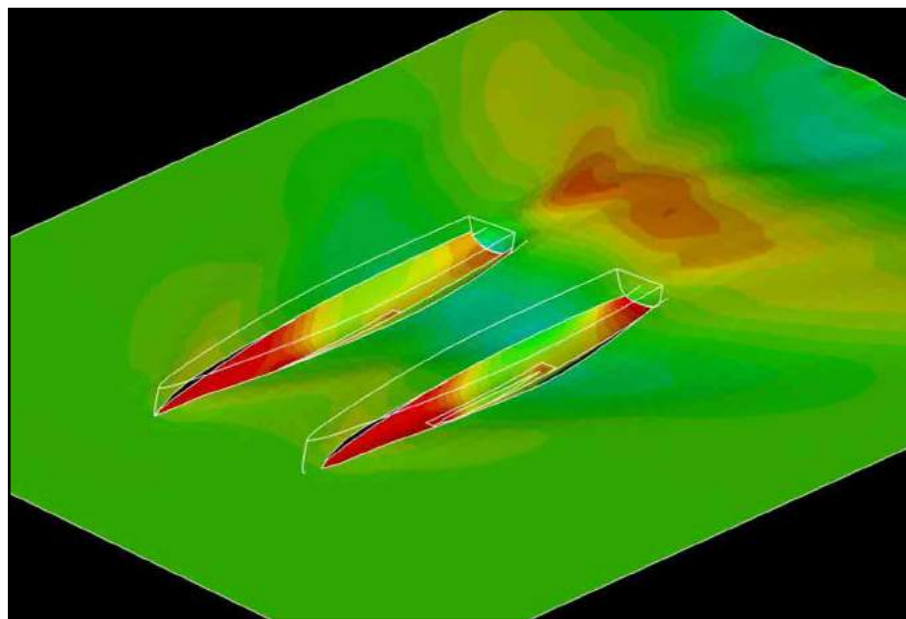
“ We have developped this project with the vision to match an elegant and comfortable catamaran with outstanding sailing abilities.”







Elegant and modern design  
from Felci Yachts  
Dufour partner since 2002



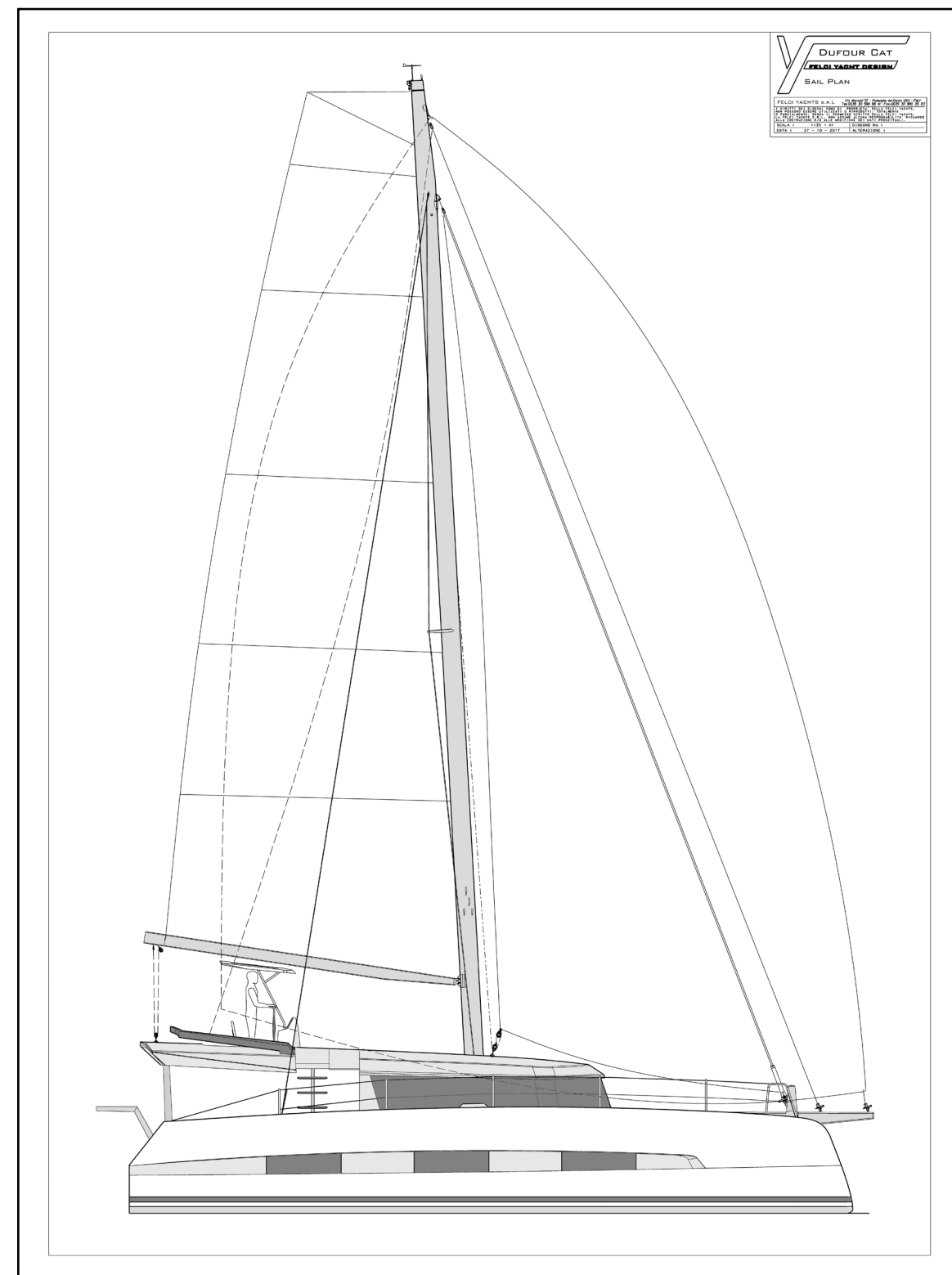
Most advanced CFD analysis techniques have  
highlighted top level hull characteristics and  
ensure outstanding sailing performances.



Full sandwich construction for maximum  
weight loss and hull stiffness



Excellent ratio between  
exterior and interior space



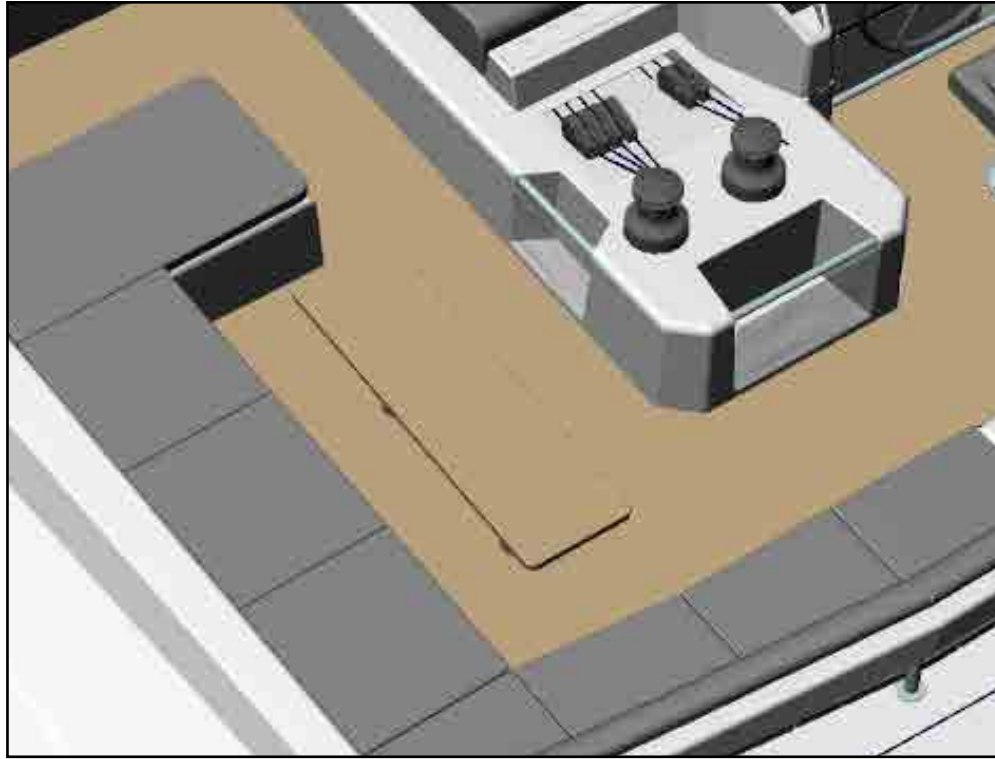
Powerful sail plan



## Flybridge cockpit extension



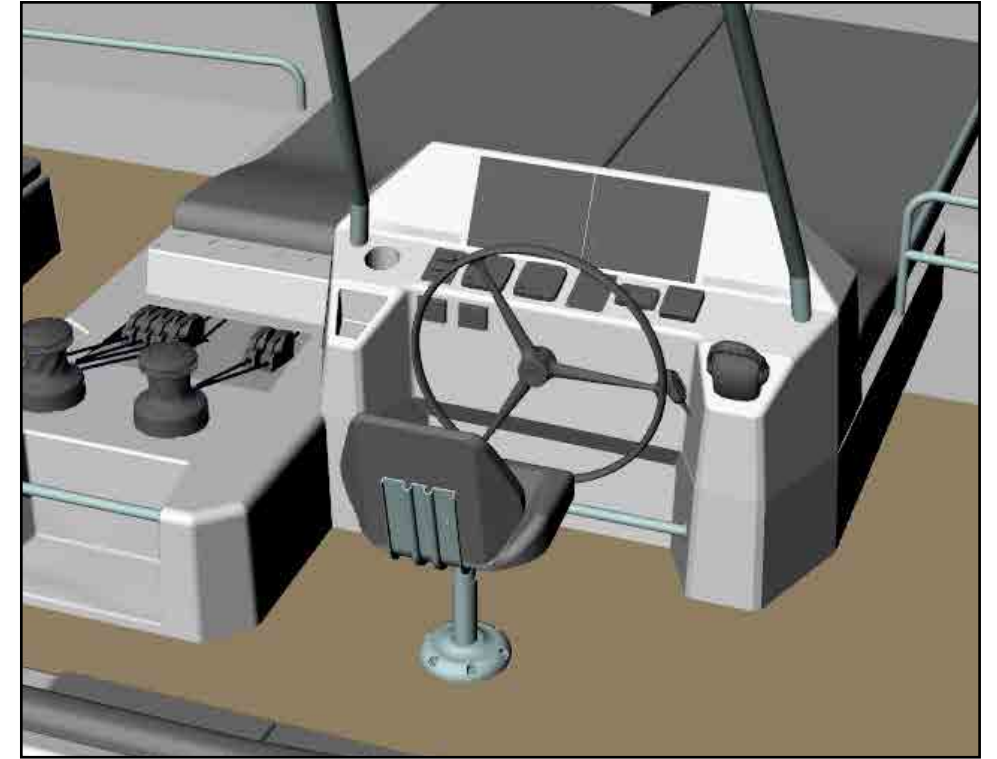




**1** Second cockpit with table



**2** Wide sunbaths area all around



**3** Upscaled helm station

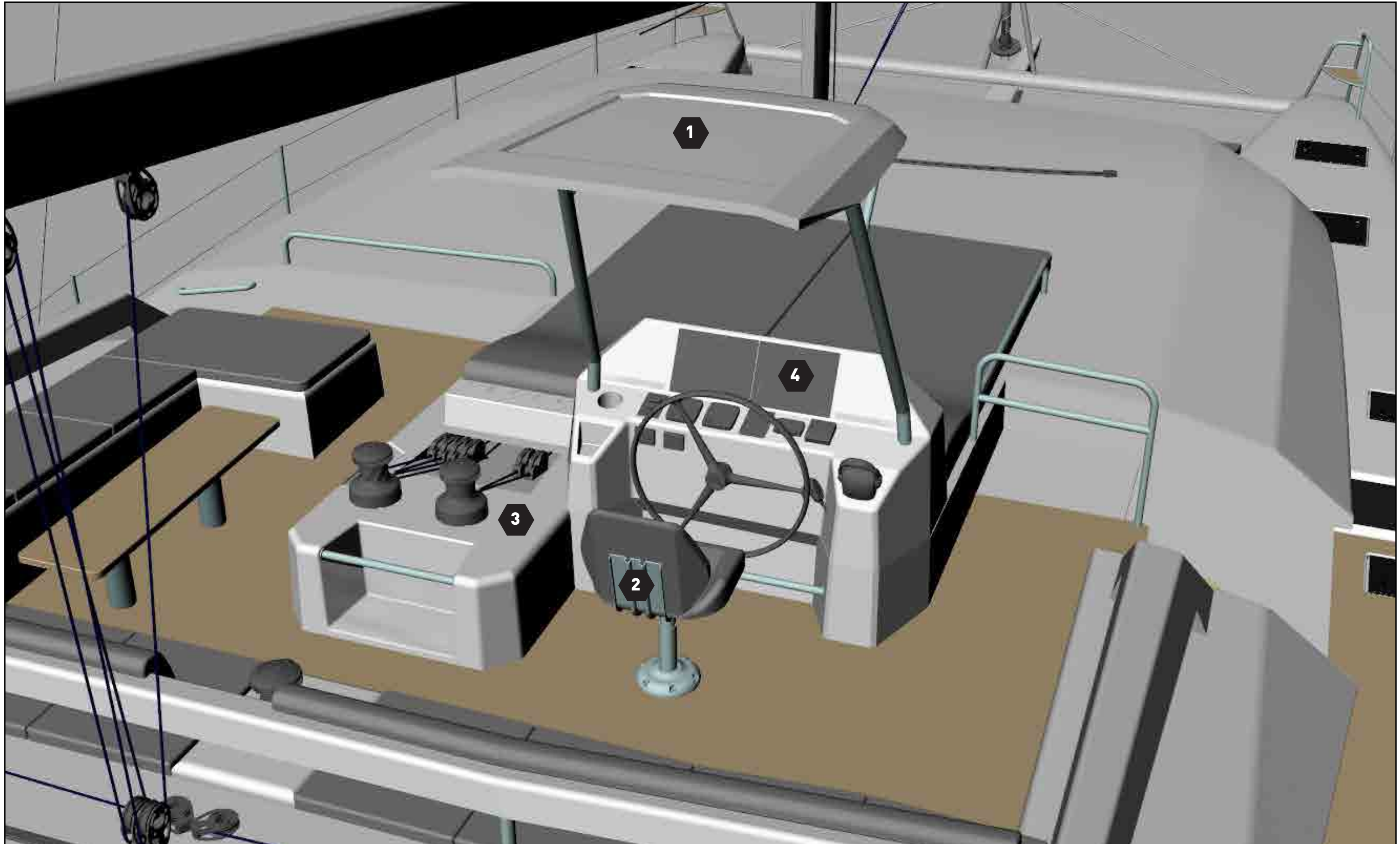


**4** Double stairs access  
 <- from cockpit to fly at starbord  
 -> from sidedeck to fly on port side

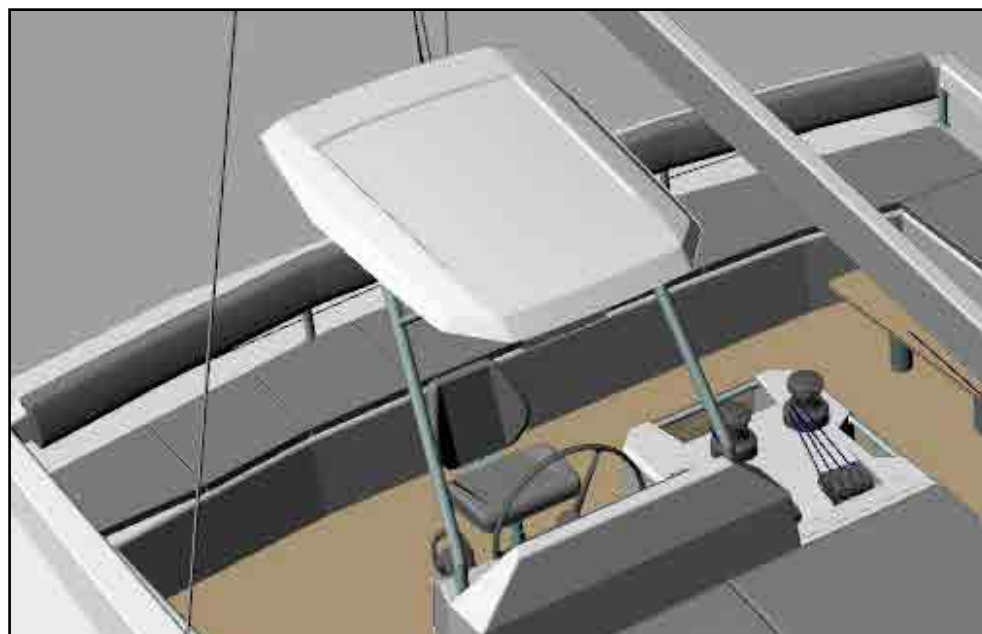




## Visibility and full helm control



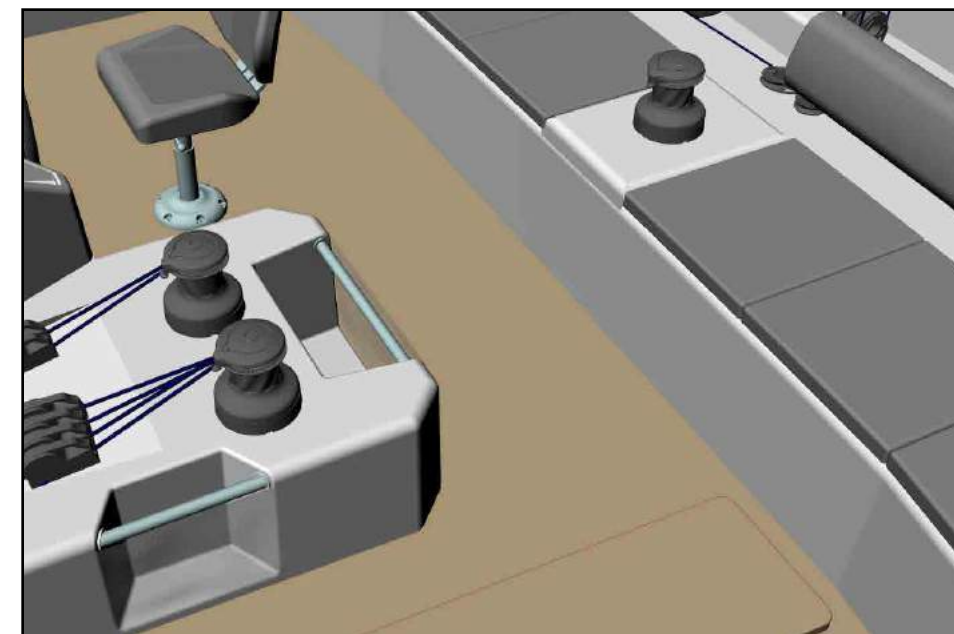




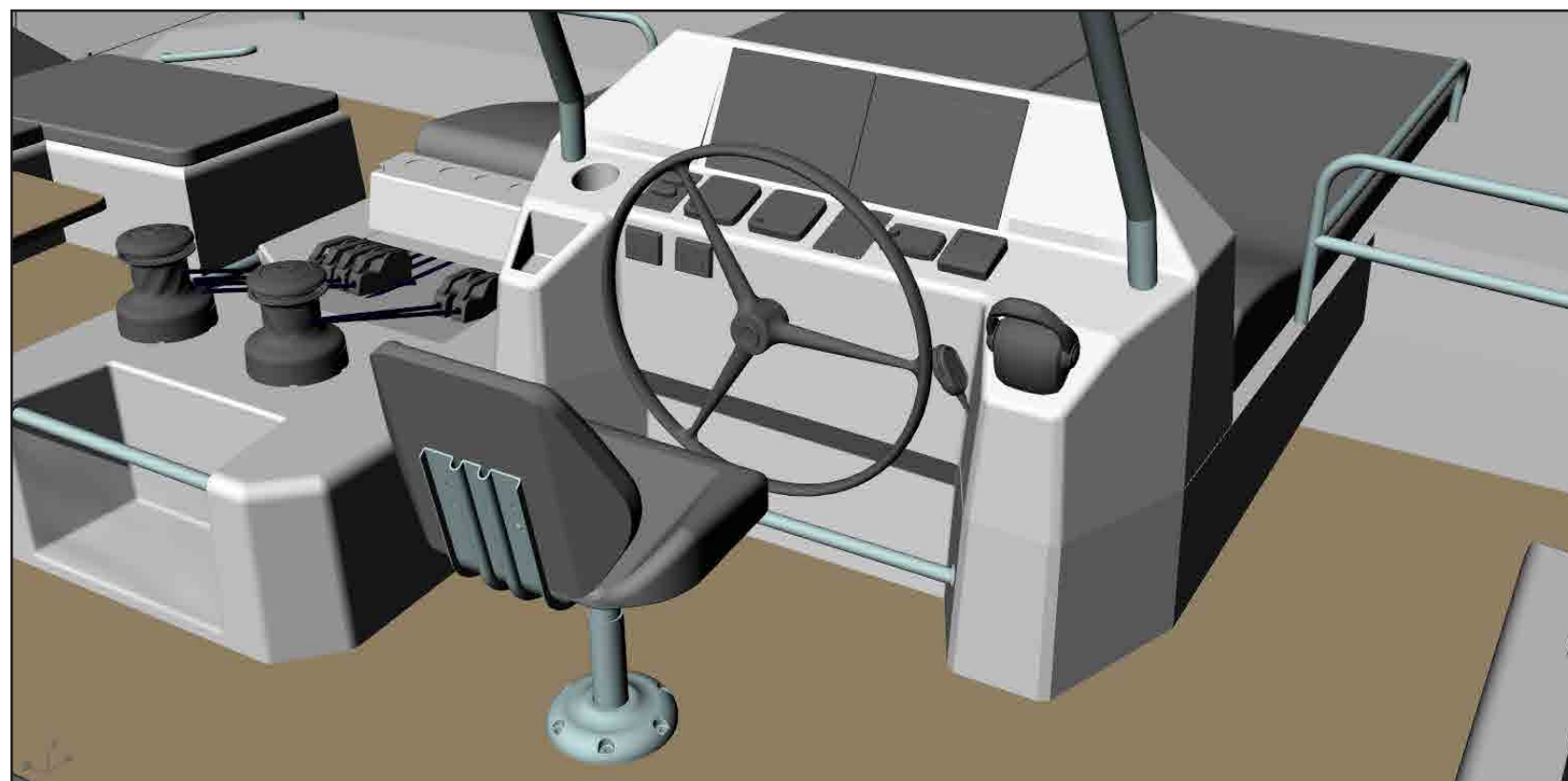
**1** Skipper hardtop



**2** Adjustable skipper seat



**3** Complete winches manoeuvring and electric main sail traveller



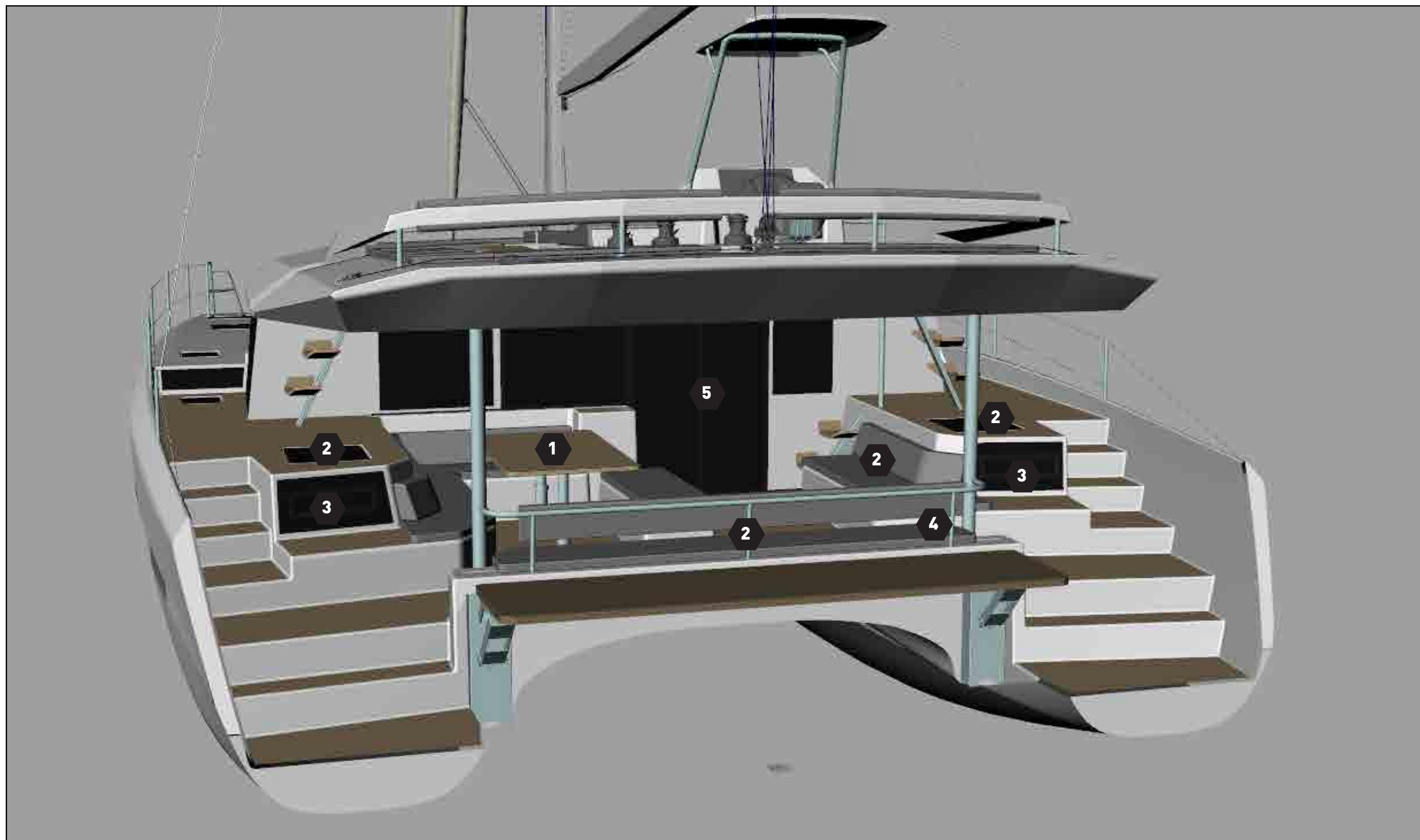
**4** Clean and flush equipment integration



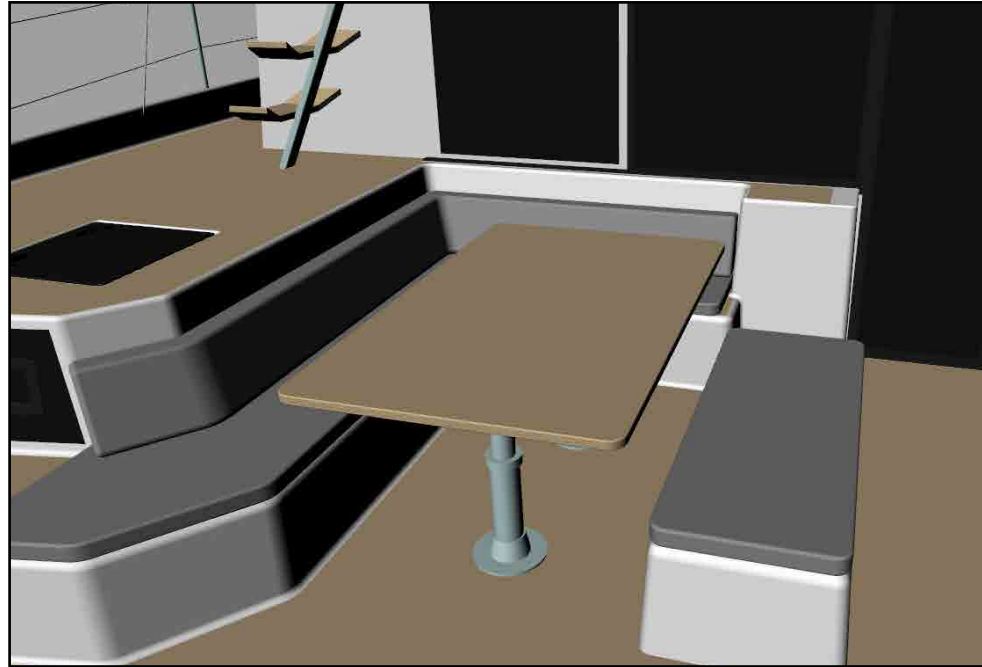
Perfect visibility around boat



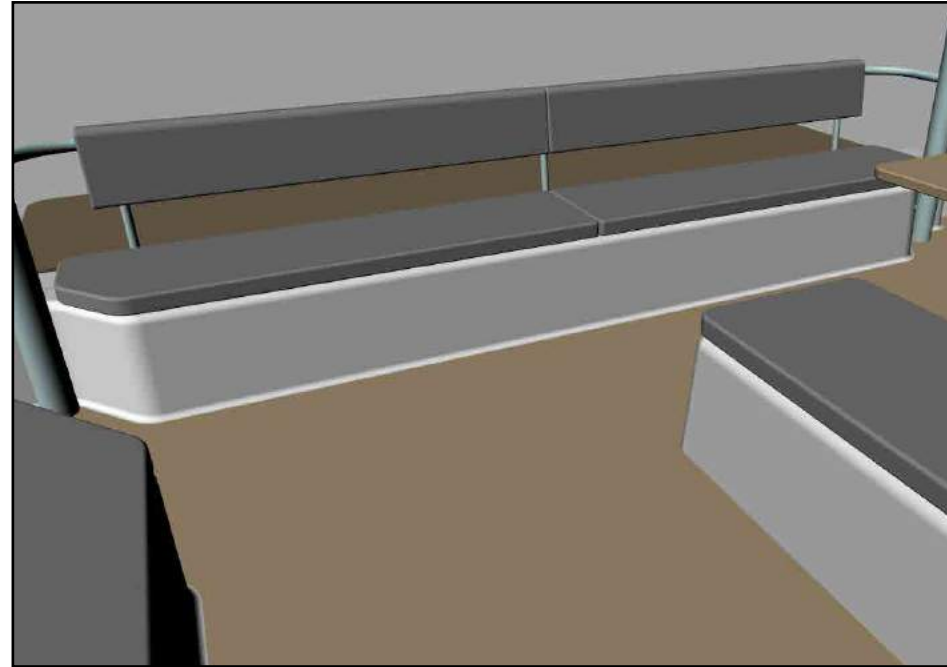
## Huge and comfortable cockpit



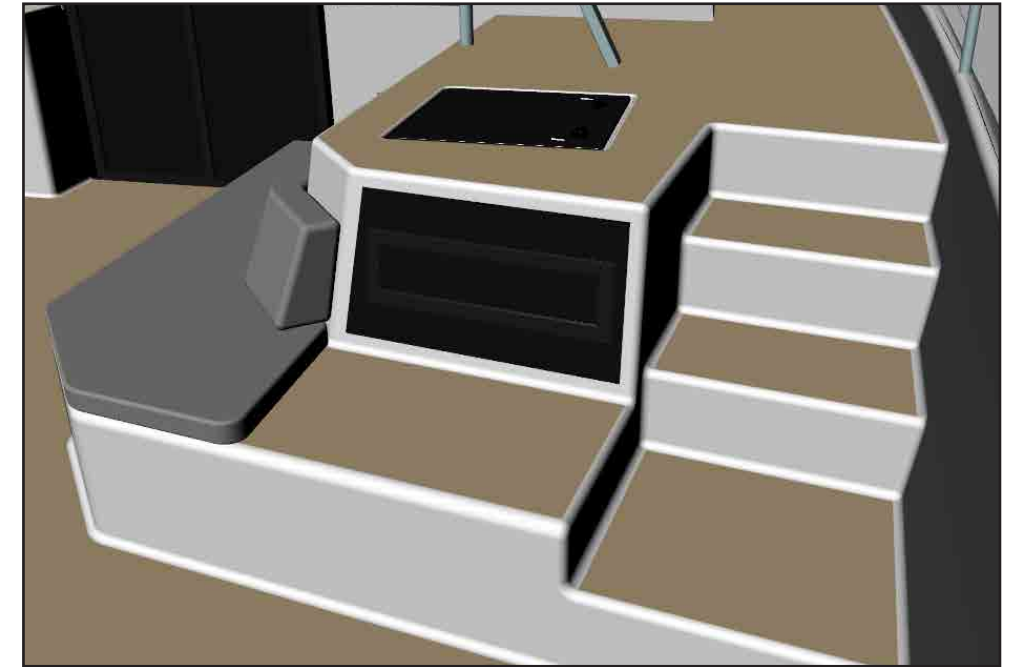




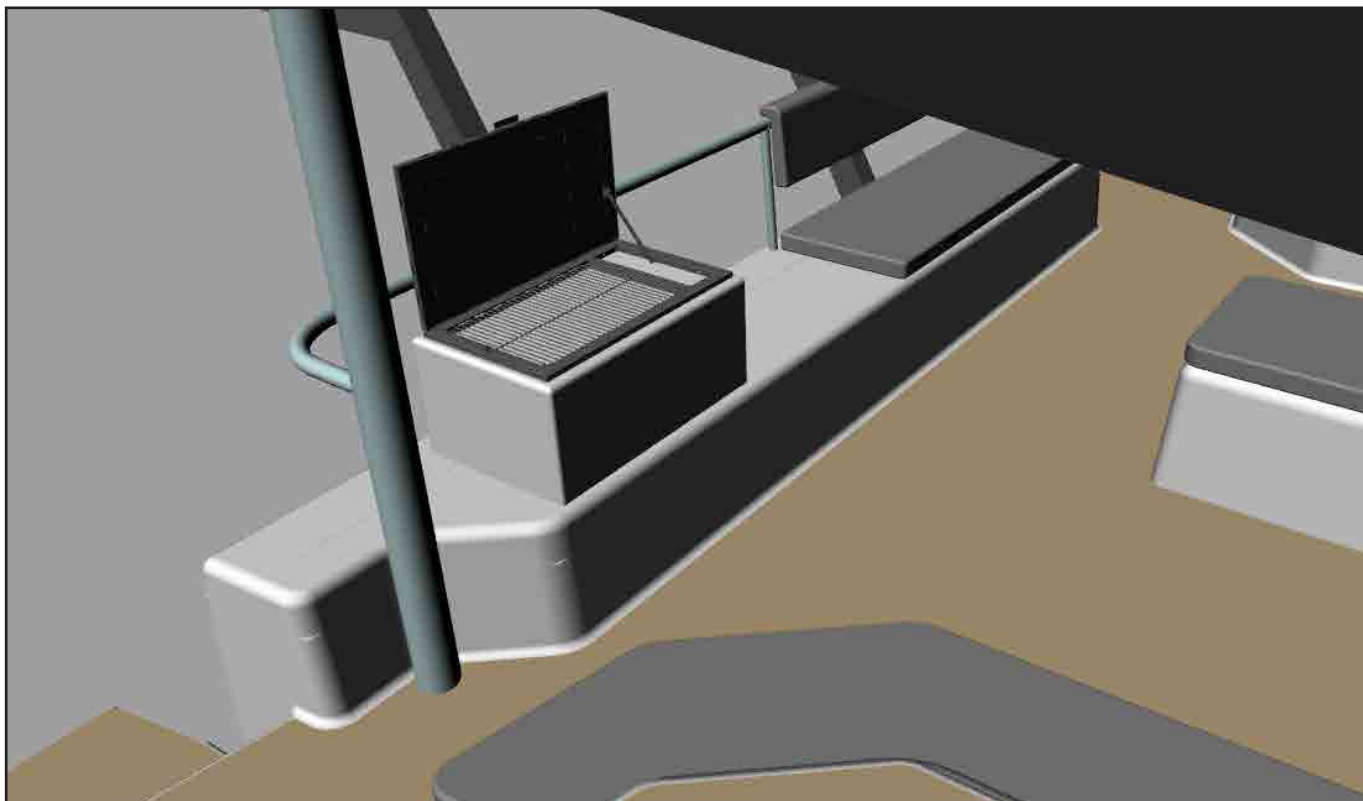
**1** Wide and spacious cockpit table



**2** Multiple sofas and sunbaths



**3** Open deck aft cabins windows for best visibility on sea and natural light



**4** Exterior galley with barbecue (opt.)



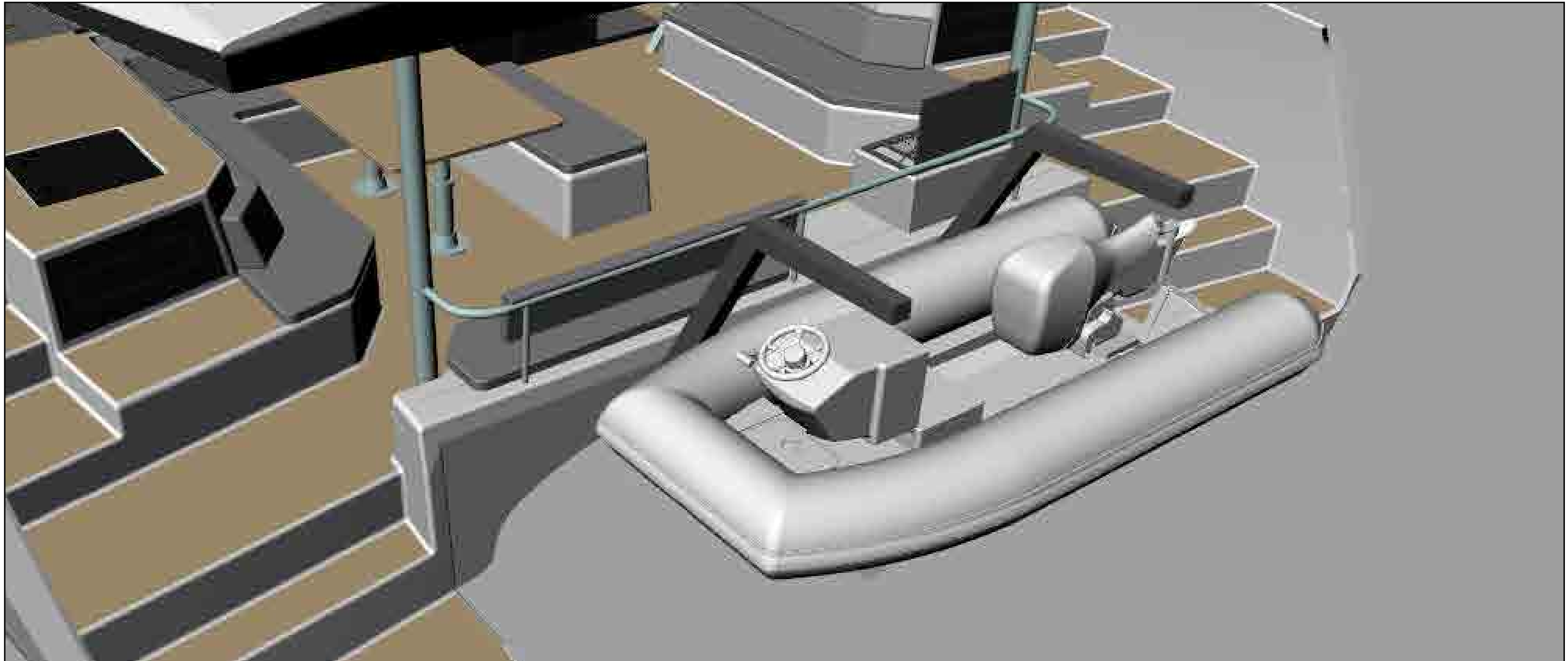
**5** Full veranda opening in 3 slides





## Perfect functionality for tender

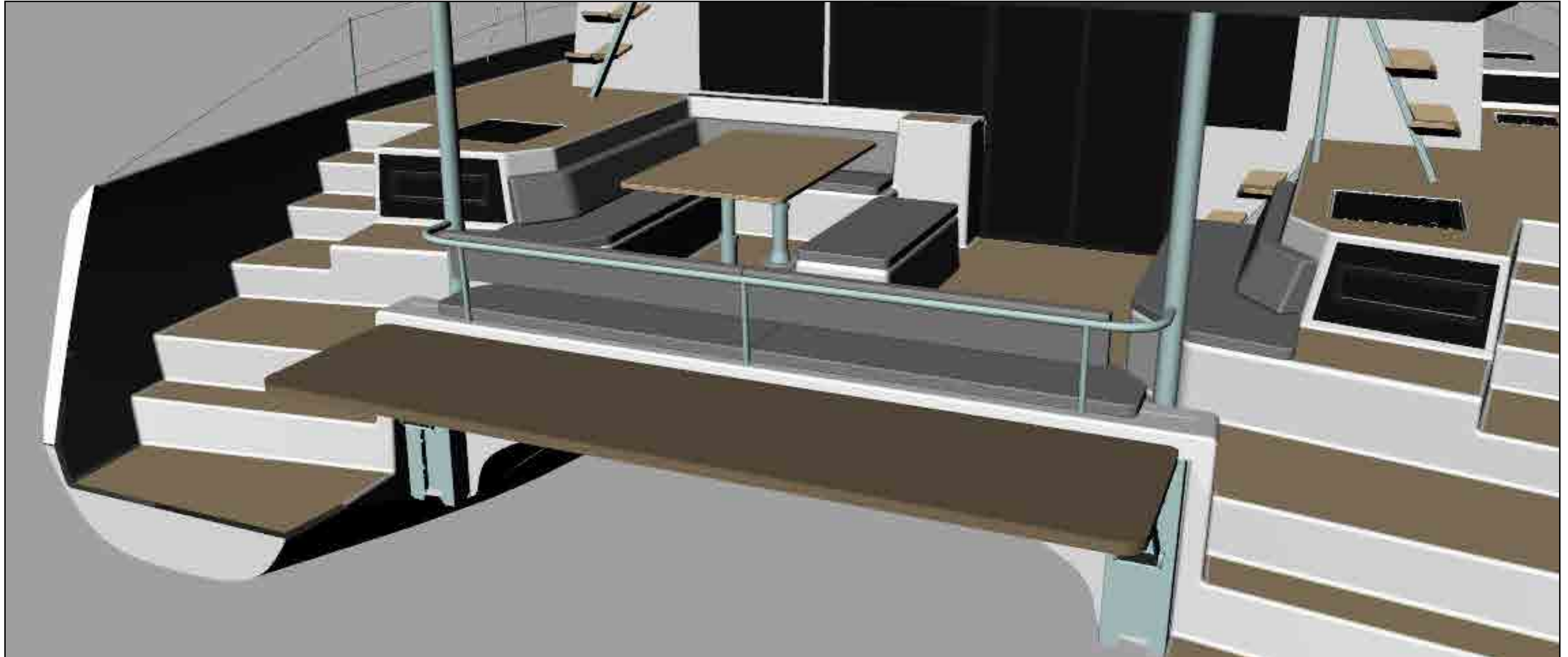
Two available options for tenders systems



### Tender davits

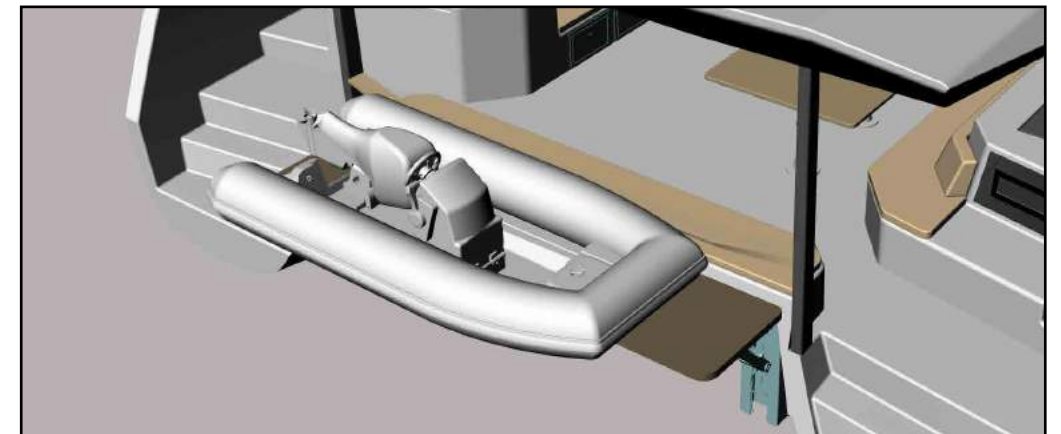
- Integrated in the whole structure
- Able to level a tender up to 650 kg.





## Electric platform - 3800mm x 900mm

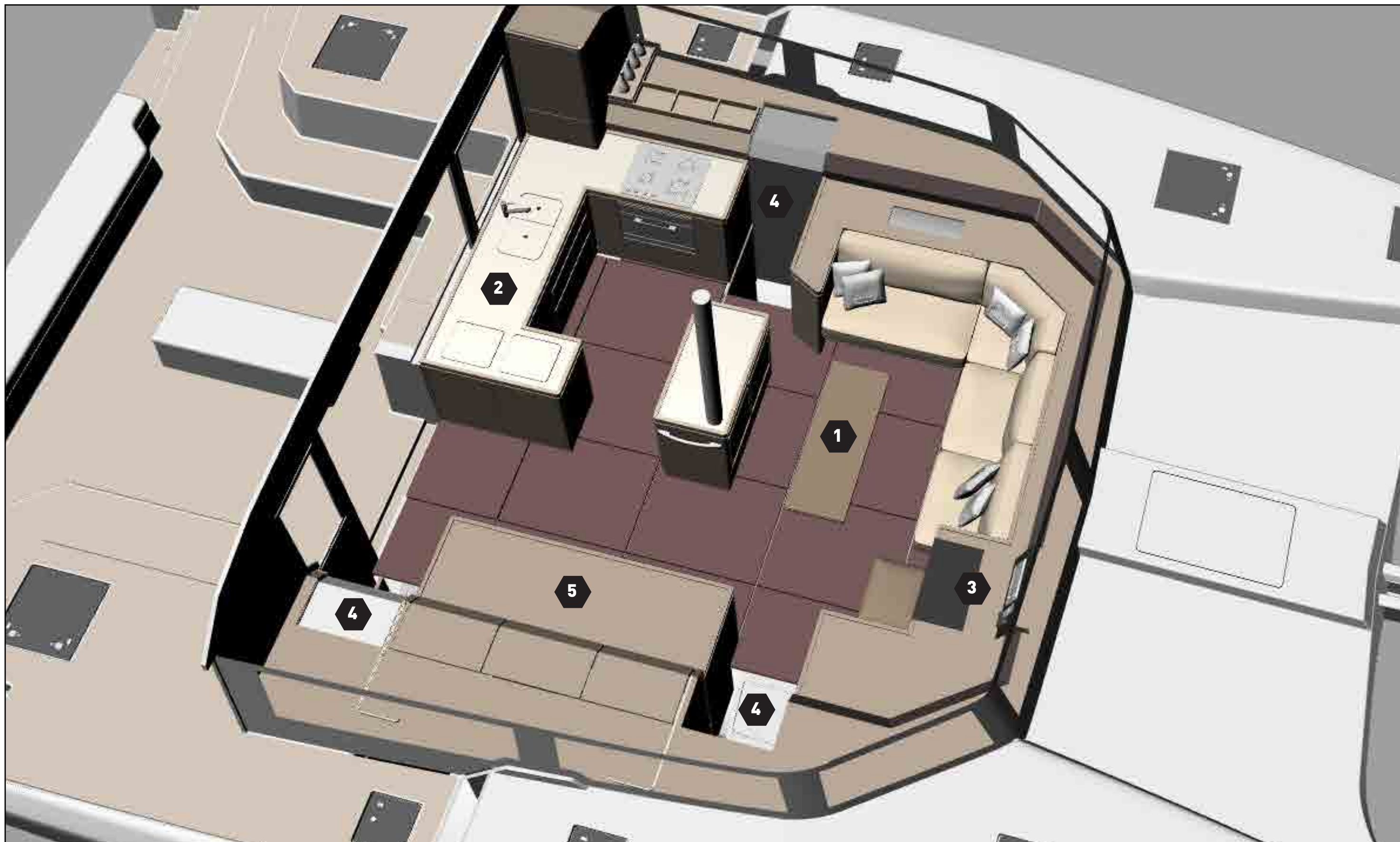
- Modern and elegant solution for most demanding clients.
- Easy to manipulate
- Can be used as bathing platform
- Able to level a tender up to 650 kg.

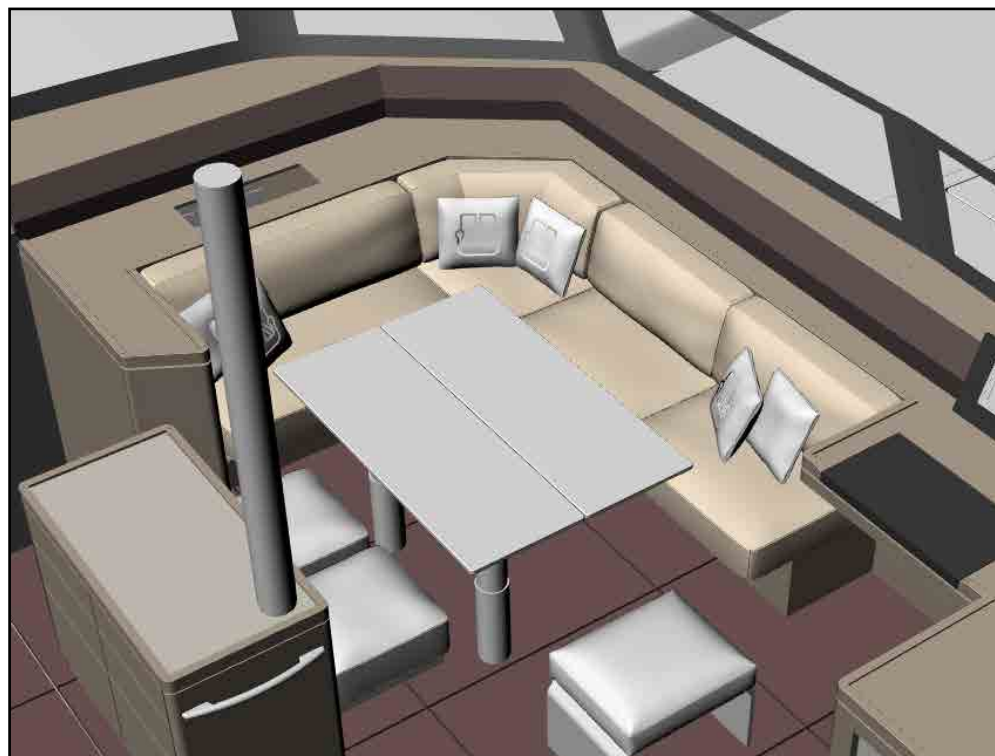






360° loft-style saloon





**1** Modular dinette for day and dining configurations



**2** Functional, spacious and fully equipped galley



**3** Chart table with autopilot control



**4** Three stairs access to cabins and day head



**5** High capacity storage furnitures





## Layout A : 3 cabins / 4 heads + skipper

### Configuration

3 Cabins / 4 Heads + Skipper

#### PORTSIDE HULL

- > 1 owner suite
- > Dressing area
- > Large sofa
- > Second storage wardrobe
- > Office area
- > Wide head with seperate shower
  
- > Crew cabin

#### STARBOARD HULL

- > 2 asymetrical guest cabins
- > Independent head with separate shower for each cabin
- > Independent head with separate shower / cabin
  
- > 1 day head with independent access from cabins
  
- > 1 service room
  
- > 1 sail locker

LOA = 14200

OWNER SUITE WITH OFFICE, SOFA  
PRIVATE HEAD AND SEPARATE SHOWER

Owner Version

Crew Cabin

Sail Locker

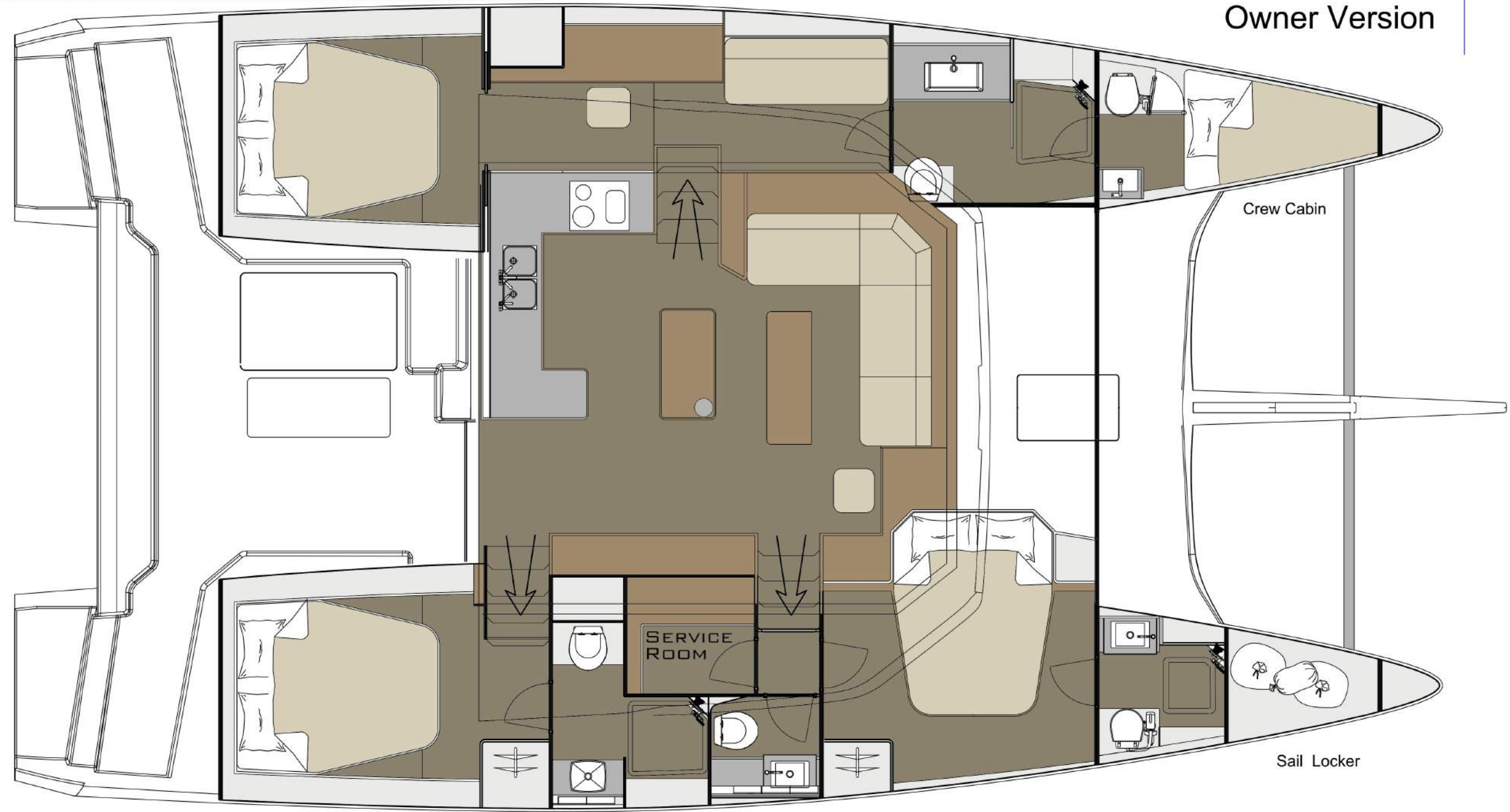
Bmax = 8000

SERVICE  
ROOM

DAY HEAD

VIP GUEST CABIN 1 WITH PRIVATE  
HEAD AND SEPARATE SHOWER

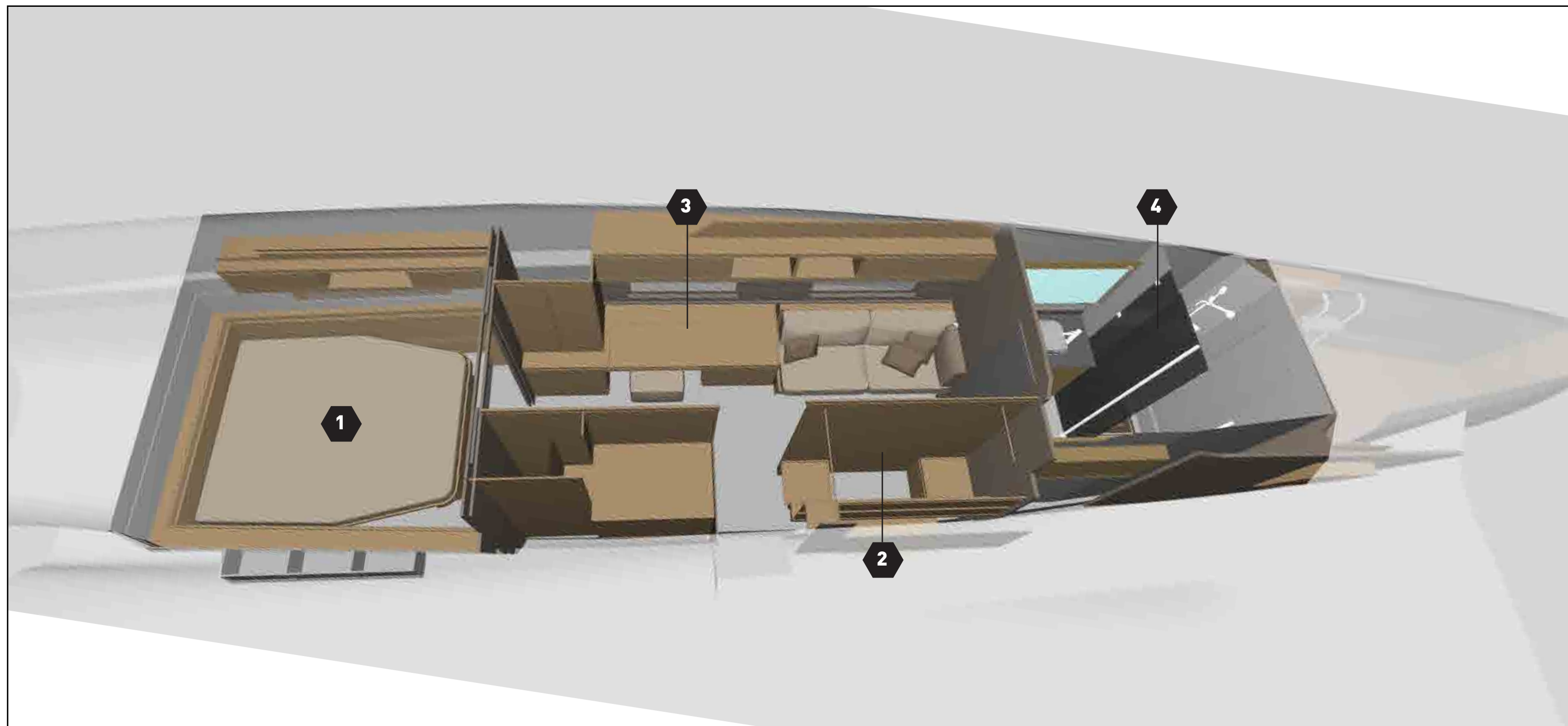
VIP GUEST CABIN 2 WITH PRIVATE  
HEAD AND SEPARATE SHOWER







## Owner suite - portside hull





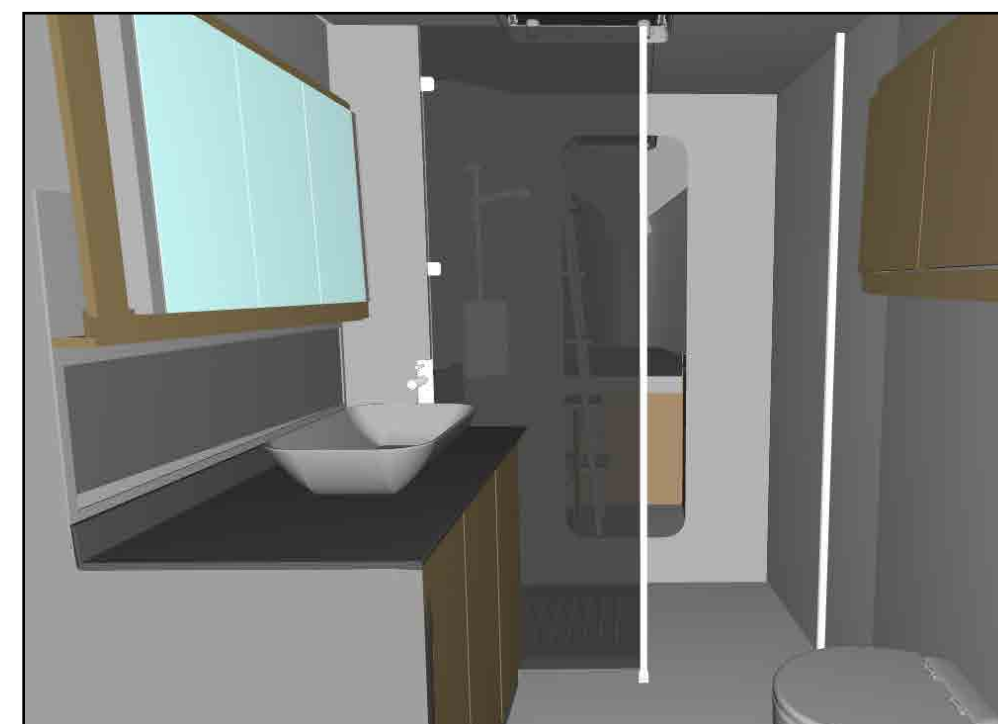
**1** Homelike bed area 2.00 x 1.70



**2** Large and organized dressing



**3** Owner office

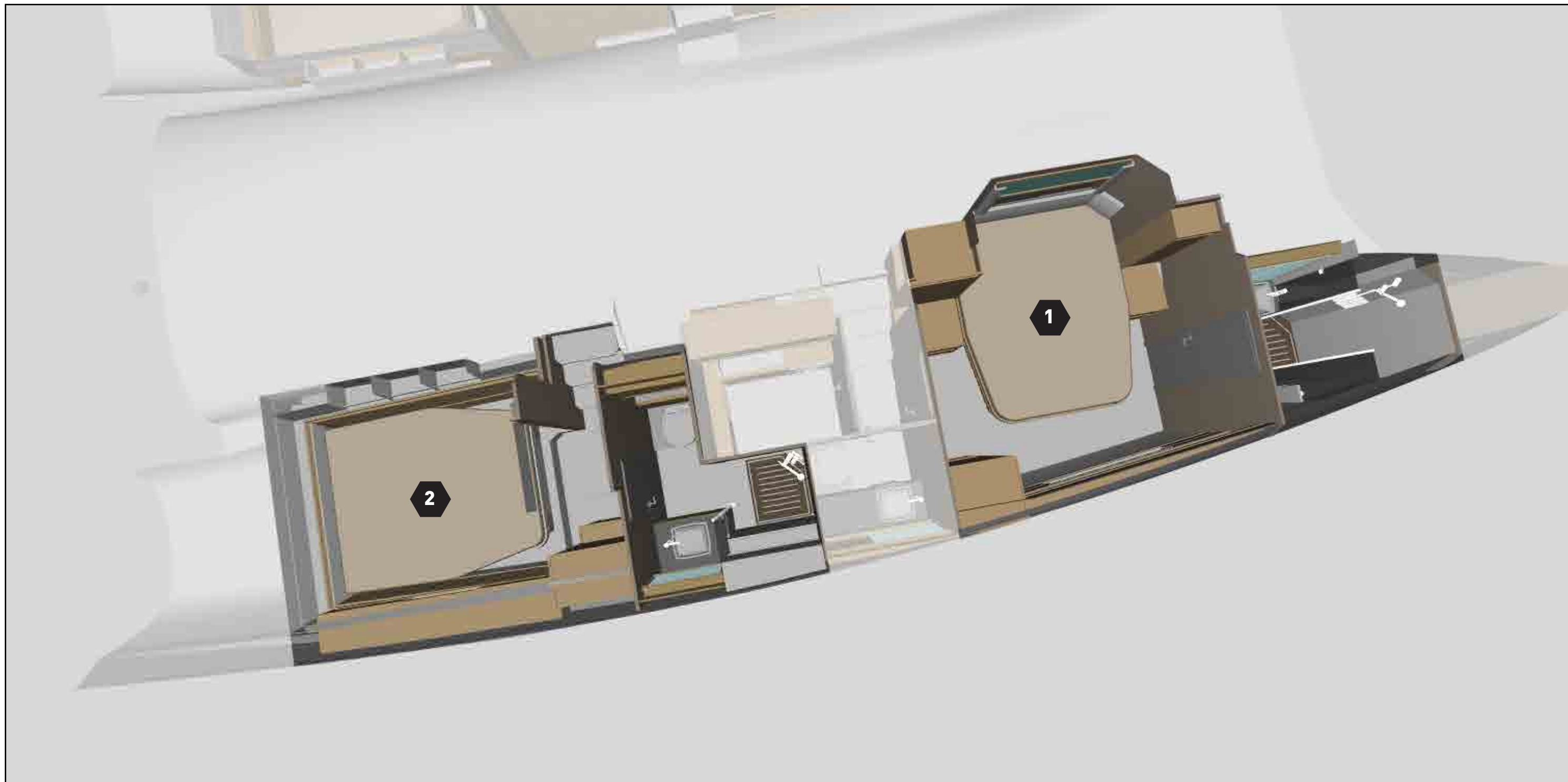


**4** Luxury head with wide bassin and separate shower



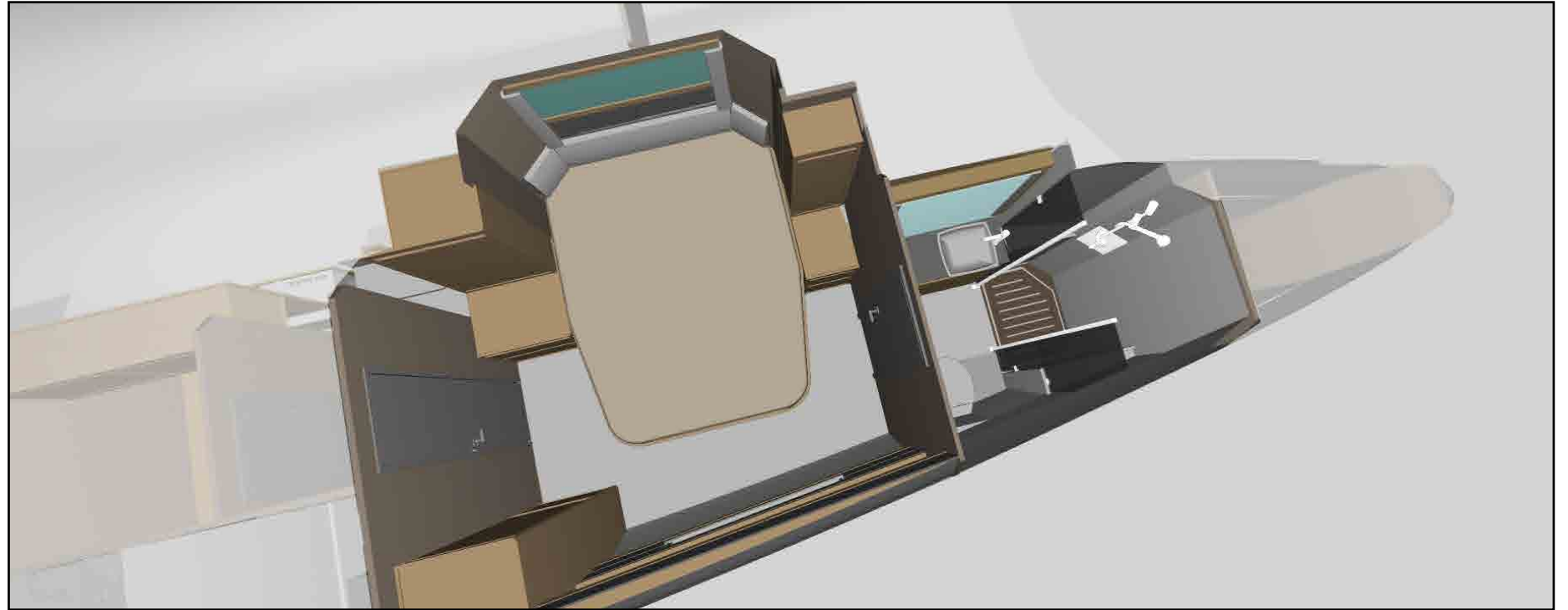


## Guest cabins - Starbord hull





**1** Front guest cabin



**2** Aft guest cabin





## Service room



### Modular functionality

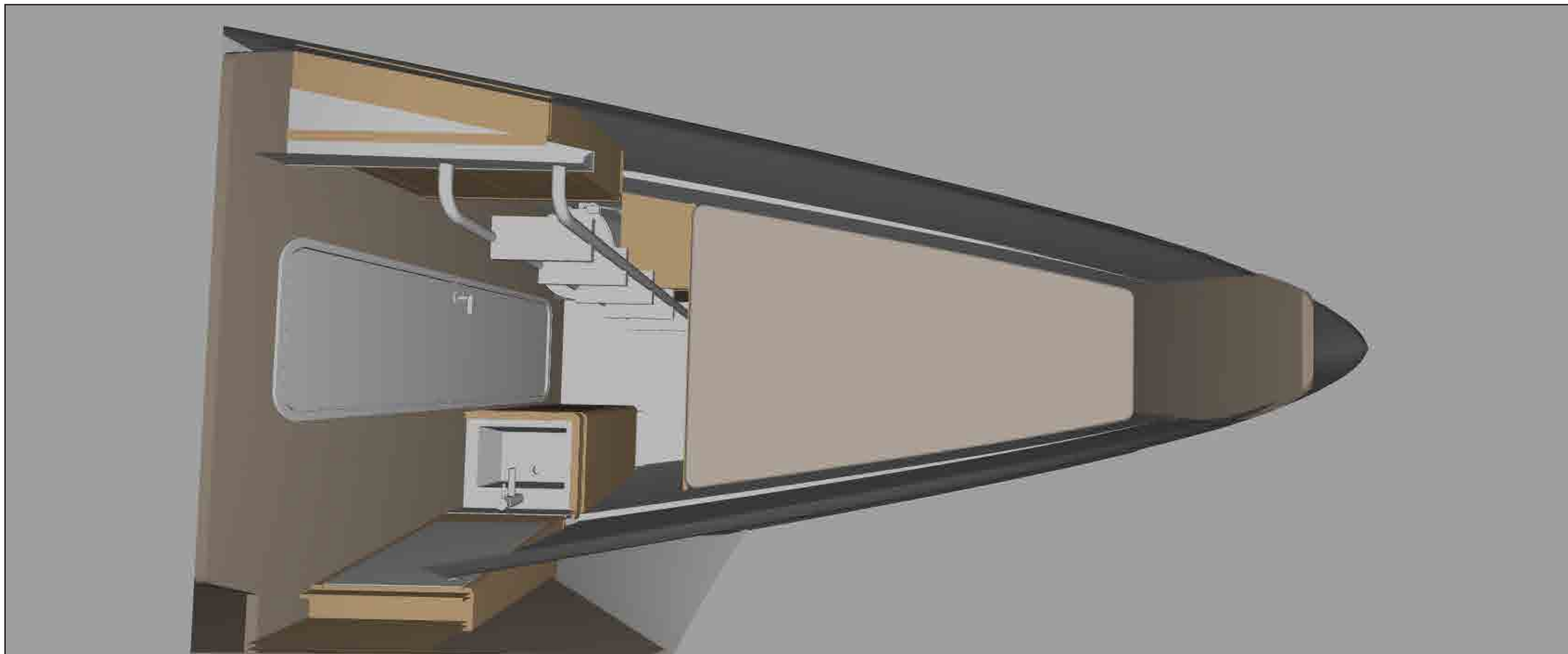
> 1100 mm x 950 mm

> Free management to setup : second galley, laundry or storage...





## Skipper cabin



### Functional and comfortable

- > Bed size : 1900 mm x 1150 mm
- > Basin, shower and wc.
- > Emergency exit





## Layout B : 4 cabins / 5 heads + skipper

### Configuration

4 Cabins / 5 Heads + Skipper

#### PORTSIDE HULL

- > 2 symmetrical guest cabins
- > Independent head with separate shower for each cabin
- > 1 crew cabin

#### STARBOARD HULL

- > 2 asymmetrical guest cabins
- > Independent head with separate shower for each cabin
- > Independent head with separate shower / cabin
- > 1 day head with independent access from cabins
- > 1 service room
- > 1 sail locker

LOA = 14200

VIP GUEST CABIN 4 WITH PRIVATE  
HEAD AND SEPARATE SHOWER

VIP GUEST CABIN 5 WITH PRIVATE  
HEAD AND SEPARATE SHOWER

Charter Version 2

Crew Cabin

Sail Locker

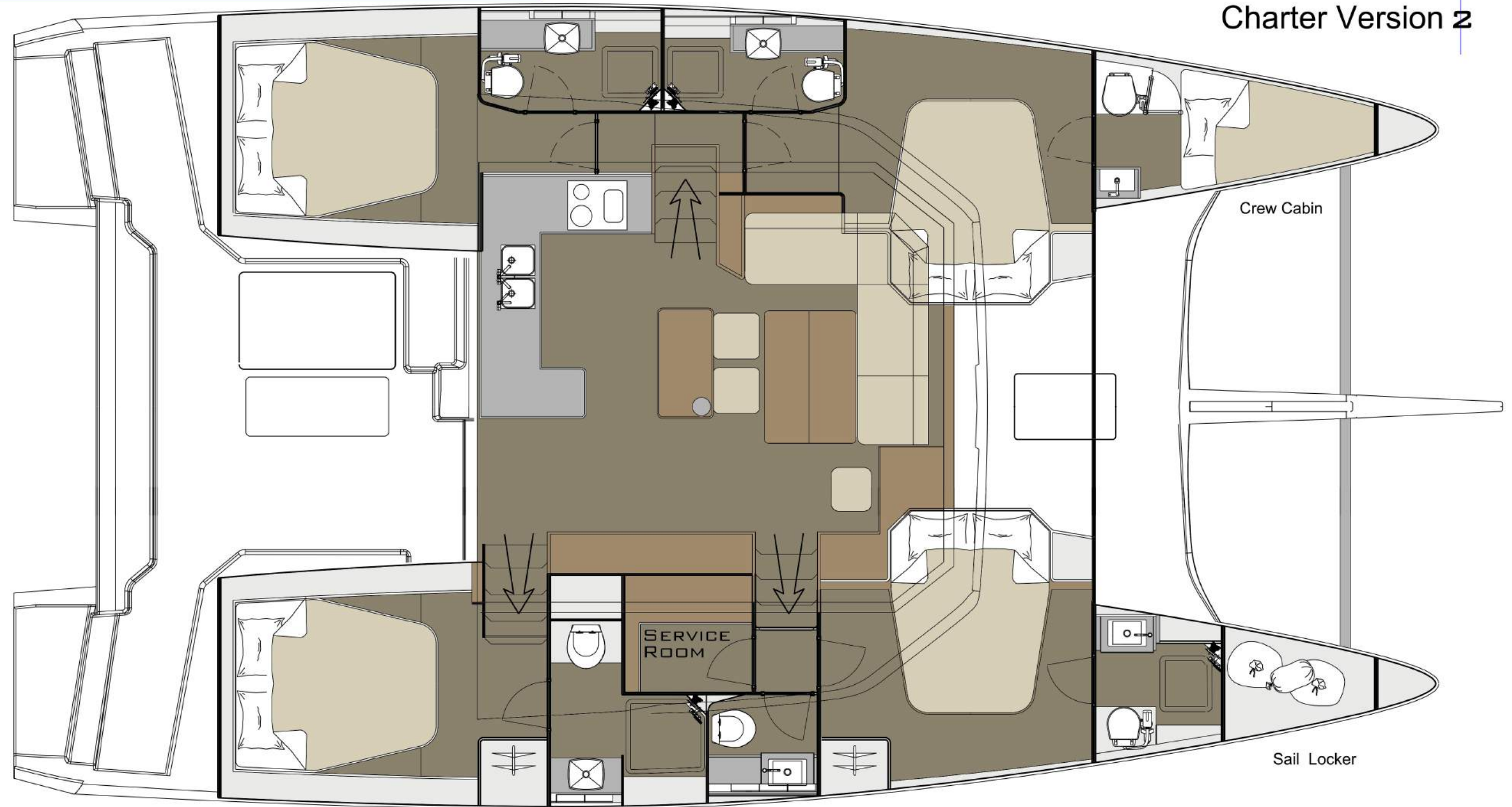
SERVICE  
ROOM

DAY HEAD

VIP GUEST CABIN 1 WITH PRIVATE  
HEAD AND SEPARATE SHOWER

VIP GUEST CABIN 2 WITH PRIVATE  
HEAD AND SEPARATE SHOWER

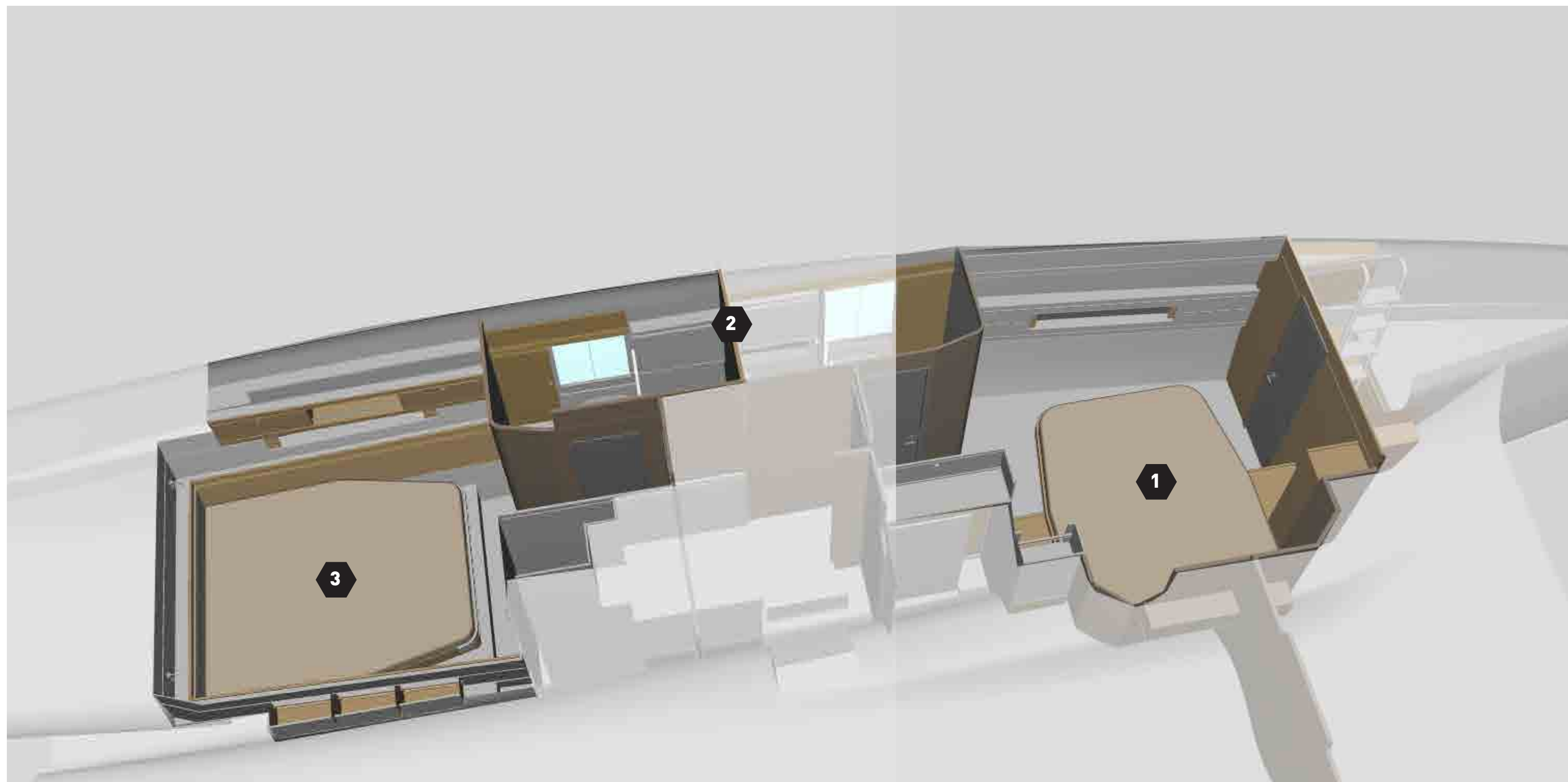
Bmax = 8000







## Guest cabins - Portside hull





**1** Front guest cabin



**2** Double head with separate shower



**3** Aft guest cabin





## Layout C : 5 cabins / 5 heads + skipper

### Configuration

5 Cabins / 5 Heads + Skipper

#### PORTSIDE HULL

- > 2 asymmetrical guest cabins
- > Independent head with separate shower for each cabin
- > 1 skipper cabin

#### STARBOARD HULL

- > 2 asymmetrical guest cabins
- > 1 additional pulman cabin with 2 beds
- > Independent head for each cabin
- > 1 day head with independent access from cabins
- > Family suite concept : parents cabin with head + children pulman with head

LOA = 14200

VIP GUEST CABIN 4 WITH PRIVATE  
HEAD AND SEPARATE SHOWER

VIP GUEST CABIN 5 WITH PRIVATE  
HEAD AND SEPARATE SHOWER

Charter Version

Crew Cabin

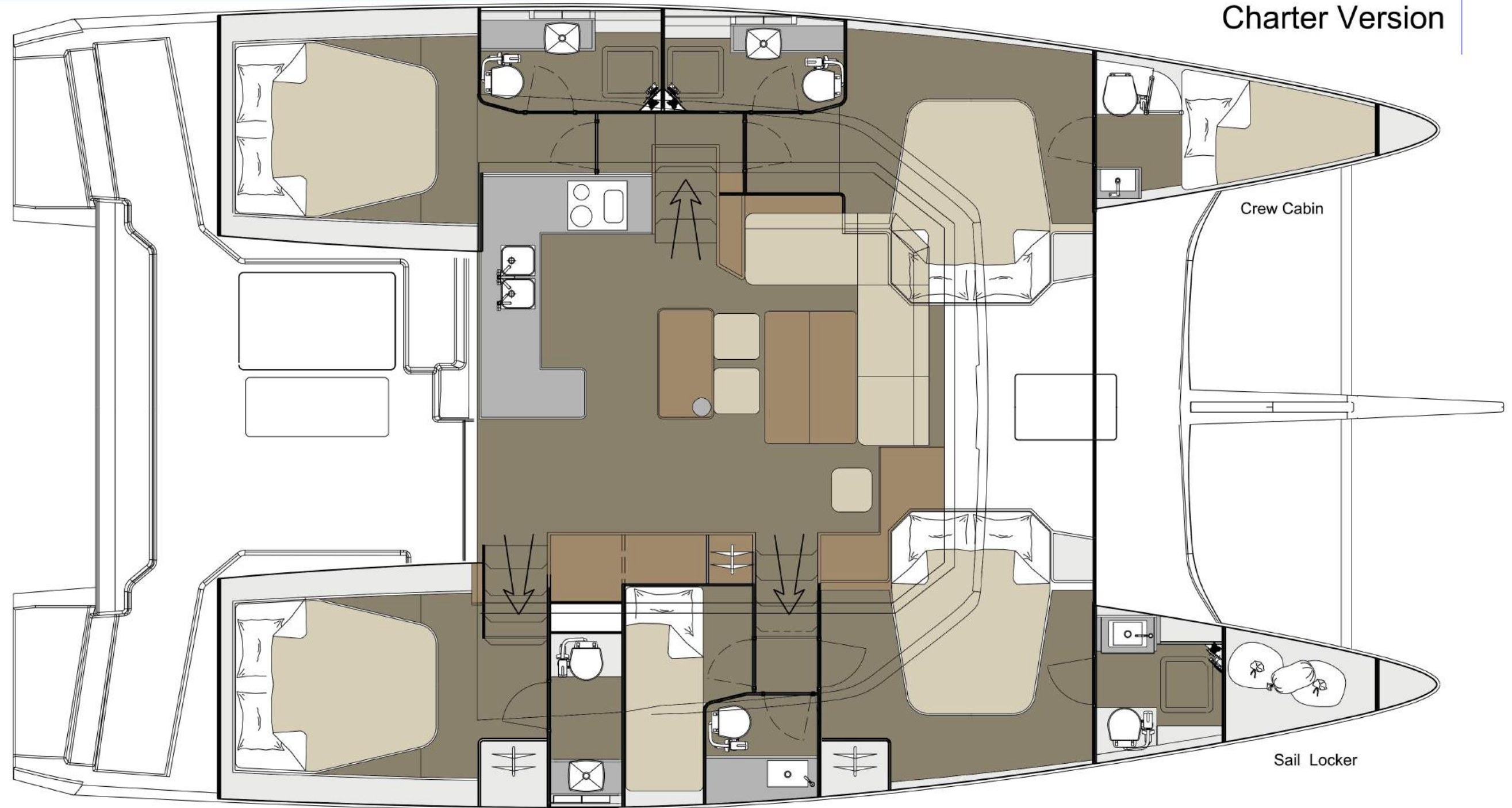
Sail Locker

PULLMAN CABIN 2  
WITH HEAD

VIP GUEST CABIN 3 WITH PRIVATE  
HEAD AND SEPARATE SHOWER

GUEST CABIN 1 WITH PRIVATE HEAD

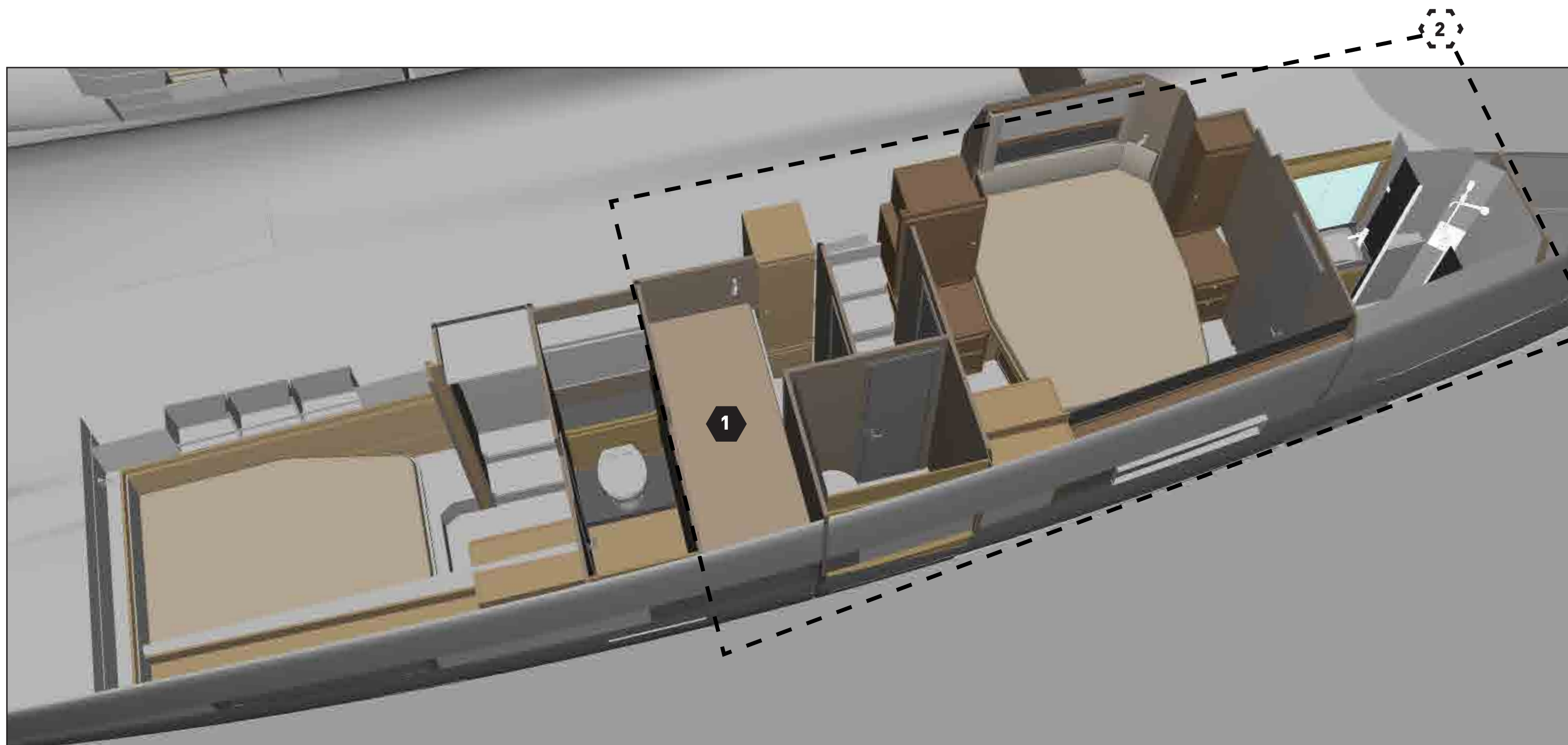
Bmax = 8000

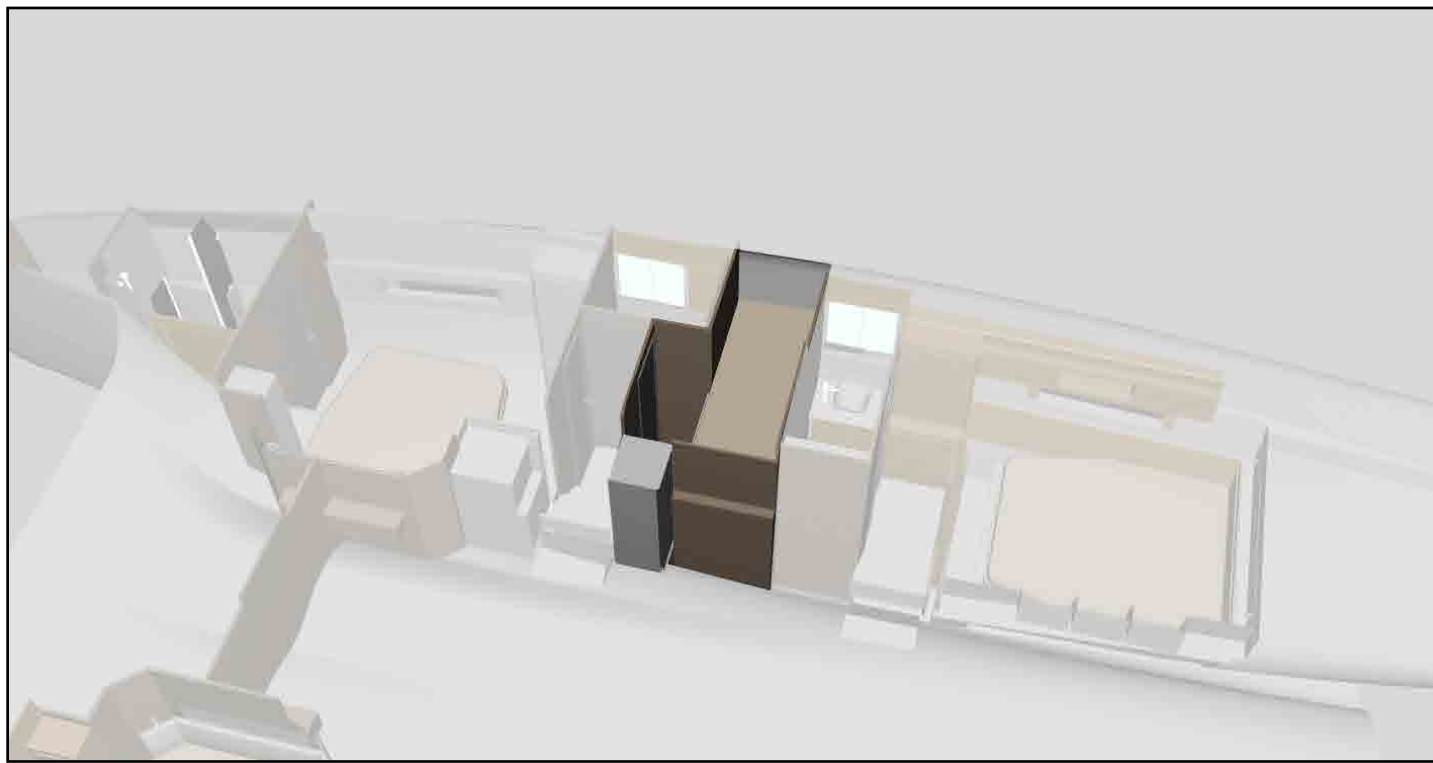




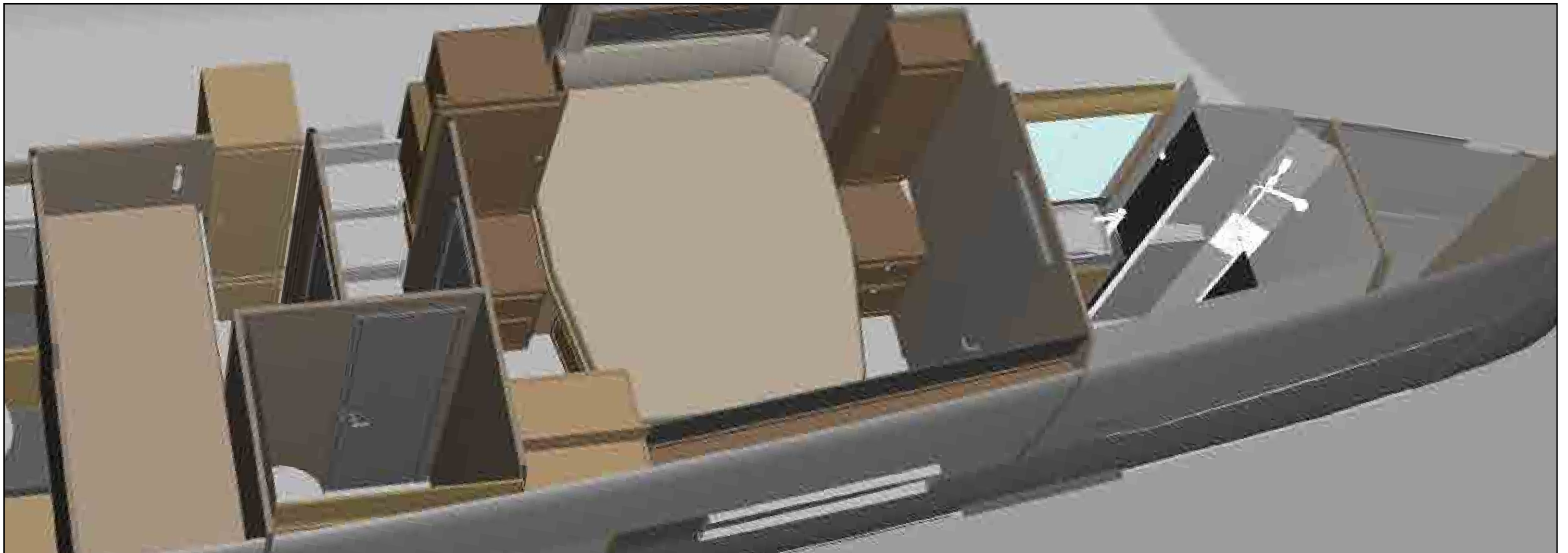


## Family suite - Starboard hull





1 Pulman cabin - 2 beds



2 Family suite - Independent parents / kids cabins





# Technical specifications

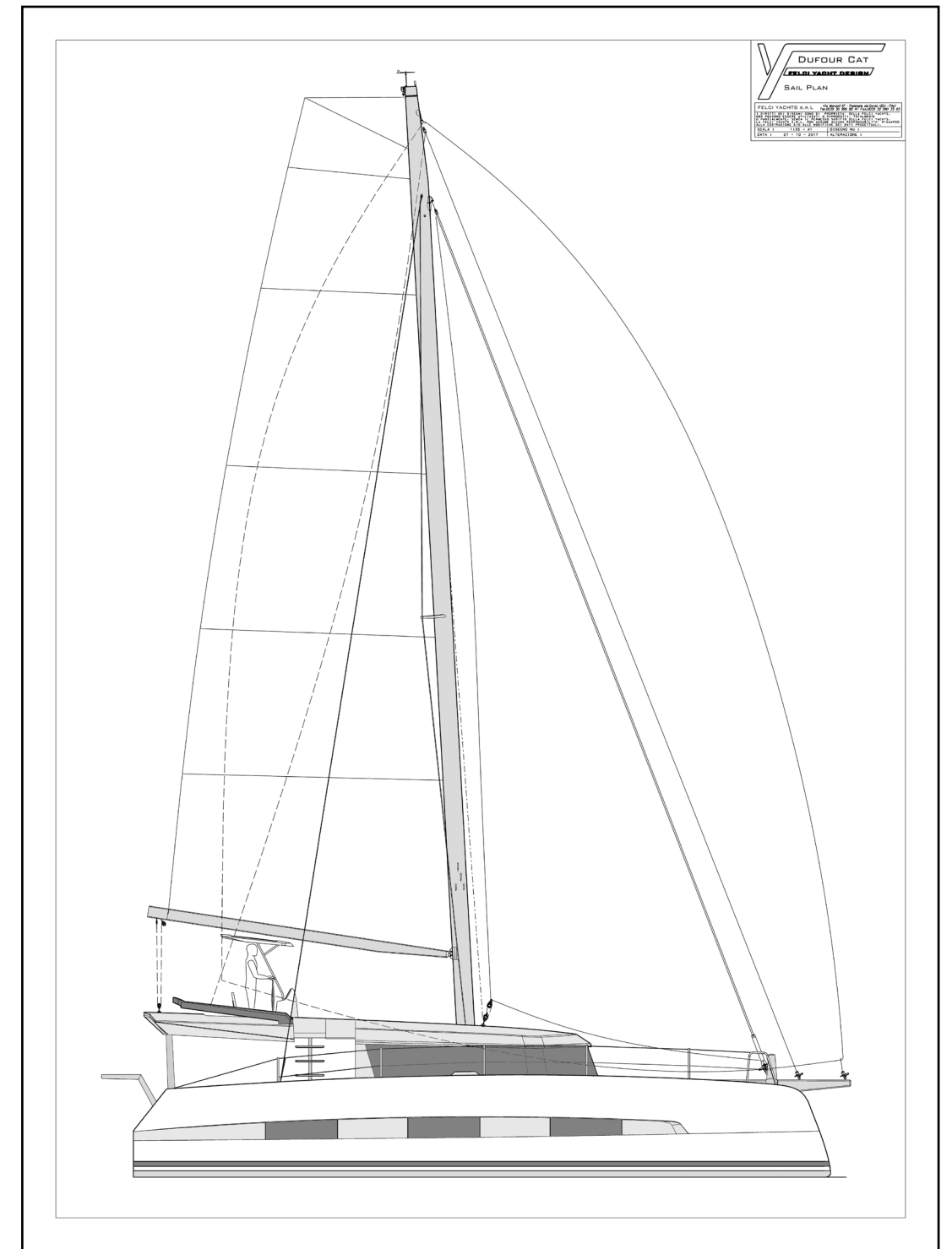
## General

|                     |           |
|---------------------|-----------|
| Architect           | U. FELCI  |
| LOA (with bowsprit) | 14,70 m   |
| Hull lenght         | 14,20 m   |
| Feet (real)         | 46,58 ft  |
| Beam max            | 8,00 m    |
| Draft               | 1.30 m    |
| Displacement        | 14 955 kg |
| Water capacity      | 700 l     |
| Fuel capacity       | 900 l     |
| Engine              | 2 x 50 cv |
| Engine (opt.)       | 2 x 60 cv |



## Sail area

|                 |        |
|-----------------|--------|
| Total sail area | 124 m2 |
| Main sail       | 76 m2  |
| Jib             | 48 m2  |
| Code 0          | 90 m2  |
| Gennaker        | 110 m2 |







**[www.dufour-catamarans.com](http://www.dufour-catamarans.com)**