
SHIPMAN 59 CARBON YACHT





THE NEXT GENERATION OF
SHIPMAN CARBON YACHTS

THE SHIPMAN 59 CARBON YACHT

THE ULTIMATE PERFORMANCE BLUE WATER CRUISER

- Hybrid/solar
- Forward deck lounge area
- 360° view pilothouse
- Integrated bimini and spraydodger
- Protected steering station
- Short-handed sailing
- Carbon-epoxy construction





A NEVER-ENDING STORY OF PASSION



Vladimir Zinchenko became a dealer for Shipman, luxury carbon sailing yachts in 2006. In 2009 he recognized the potential of the first production hybrid motor boats Greenline Yachts, the pioneer in hybrid propulsion and the world leader with more than 500 hybrid yachts sailing. The journey between the Carribbean and the Mediterranean ended for Vladimir and his wife in 2011 when he parted ways with his Shipman 63, and settled down.

Now, Vladimir Zinchenko is at the helm of Slovenia's largest yacht producer, SVP Yachts, employing 250 people and growing rapidly with at least one new model launching every year.

"During our journeys we learned how to make everything on the yacht convenient, comfortable and safe. We are now sharing these concepts with Shipman and Greenline Yachts owners".

"Our journey began in 2004 when my wife and myself decided to turn our lives upside down", said Vladimir in a casual conversation over a coffee.

"My lifelong romance was sailing and the sea. We left Russia and bought a sailing yacht in Northern Germany setting sails for the Carribbean. The journey lasted seven years and our destination was finding a place to settle down. After 250.000 miles, six Atlantic crossings and visiting close to 60 countries, we arrived. In Slovenia".

THE CONCEPT



Having built the world's largest carbon sailboat fleet, which has sailed hundreds of thousands of miles in the past decade, Shipman Carbon Yachts has accumulated immense know-how in carbon-epoxy build technology, hydrodynamics and ease of handling.

The research in the hydrodynamics area and sail-handling technology allowed us to create a new Shipman which delivers new levels of comfort, safety, performance and ease of handling - especially when shorthanded.

Shipman yachts were born on the drawing boards of J&J Design office. J&J designers were also the developers of the new hybrid and solar technology which was used with enormous success in the Greenline Hybrid range of boats, of which over 400 have been delivered to date. This created a base for further development of this technology for Shipman.

Hybrid means diesel-electric propulsion with a lithium battery, which enables zero-emission operation in marinas, ports and anchorages. The important amount of energy stored gives 220/110 V AC power at any time, increasing the level of convenience and comfort aboard. This feature also eliminates the use of a generator during night-time. The electric drive motor serves also as the generator, eliminating the complexity and weight of a second diesel engine.



SHIPMAN 59

ENTER THE SHIPMAN 59 HYBRID SOLAR CARBON YACHT

The Shipman 59 offers a range of new features beside the traditional values of a Shipman Carbon Yacht - short-handed sailing, superb performance, and deckhouse comfort:

- Solar power: sun generated electricity
- Forward deck lounge area, a private spot in the first row
- Protected steering station at the companionway: *steering controls, chartplotter, automatic sail handling controls located in a safe, dry and comfortable position under the spraydodger*
- Protected cockpit: sailing and lounging are not interfering with each other
- An extra-large and truly panoramic salon with a 360 degree view



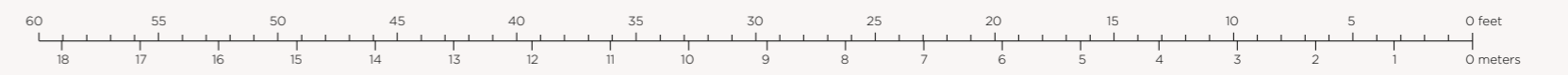
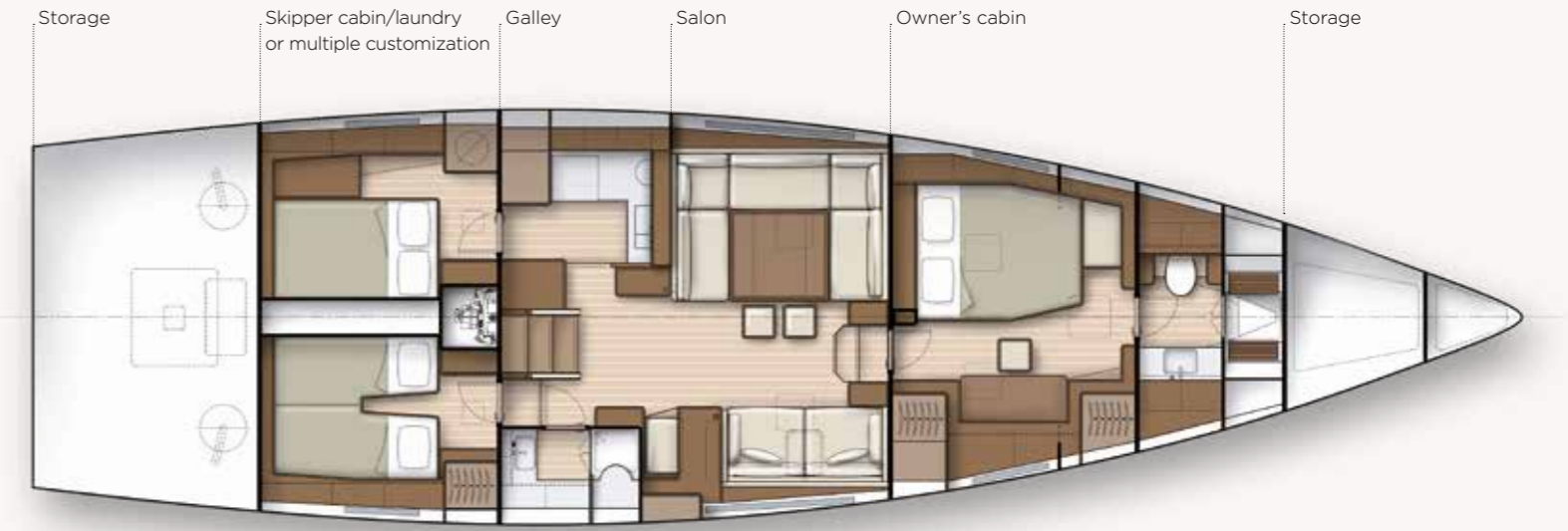


SHIPMAN 59

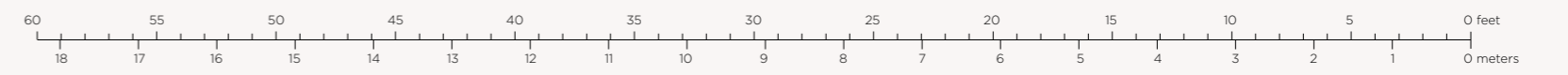
DECK



INTERIOR A



INTERIOR B





SHIPMAN 59

Technical data

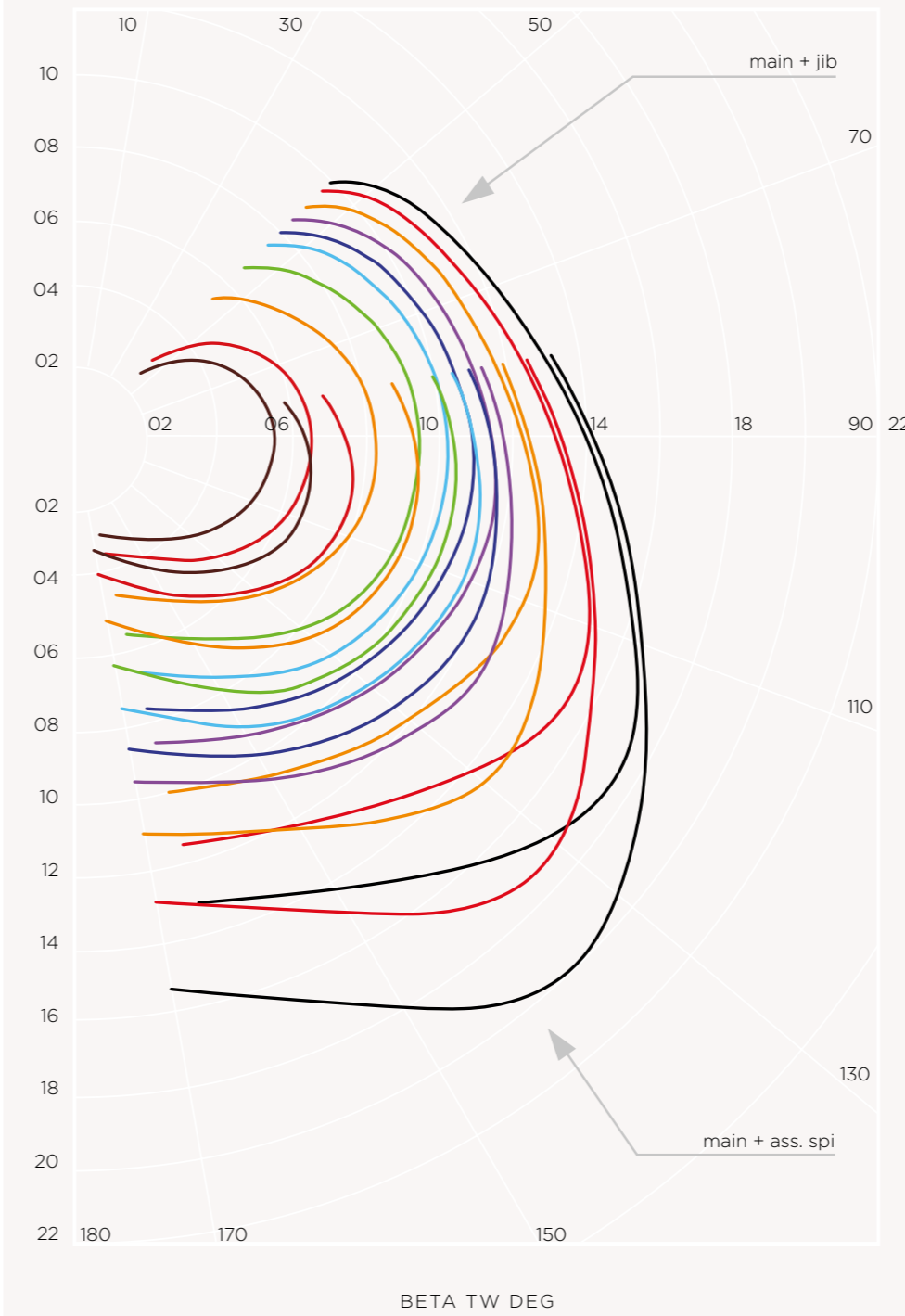
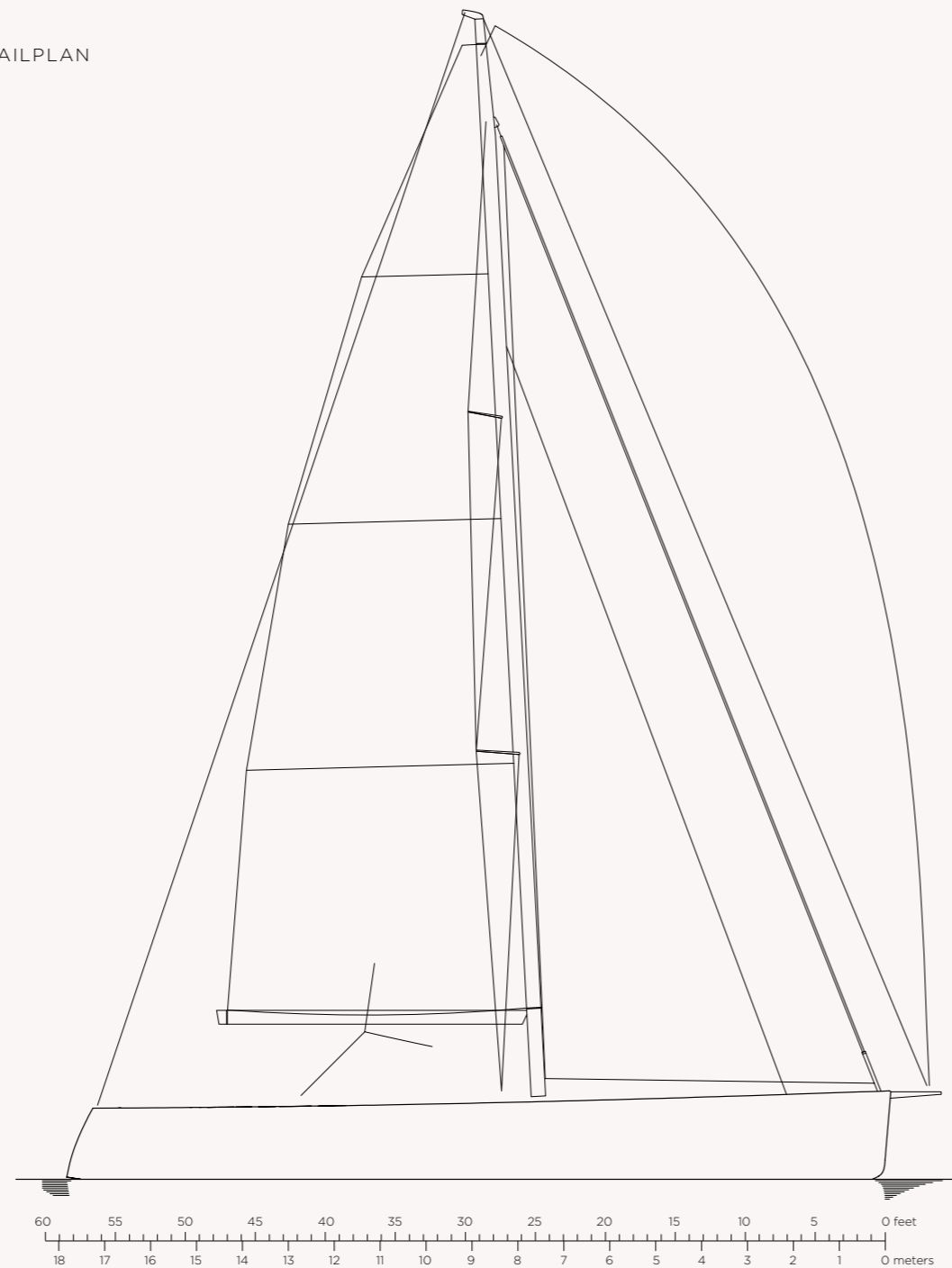
Length Overall (incl. bowsprit)	18,90 m	62'
Hull length CE ISO	17,98 m	58'11"
Lwl	17,45 m	57'3"
B max	5,29 m	17'4"
Draft standard Keel	2,85 m	9'4"
Draft optional Lifting Keel	2,5 - 3,0 m	8'2" - 9'10"
Ballast	5.400 kg	11.905 lbs
DSPL empty CE std. spec.	appr. 17.800 kg	appr. 39.000 lbs

Mainsail full batten	87,1 sqm	937 sqft
Jib 100%	72,8 sqm	783 sqft
Flying Code "0" on Bowsprit	140,0 sqm	1506 sqft
Spinnaker (asymmetrical)	190,0 sqm	2045 sqft

I	21,30 m	69'10"
J	7,20 m	23'7"
P	20,90 m	68'6"
E	6,50 m	21'3"

Cat. CE	A
Design	J&J Design
Builder	SVP Yachts

SAILPLAN



VPP Diagram

Wind speed

TWS 4	■
TWS 6	■
TWS 8	■
TWS 10	■
TWS 12	■
TWS 14	■
TWS 16	■
TWS 20	■
TWS 25	■
TWS 30	■

Best speeds and angles

Boat speed	True wind angle
V kn	TWA deg.
5.3	100
6.6	100
7.75	100
8.8	100
9.5	100
10.1	100
10.5	100
11.3	110
12	110
12.8	120
14.6	130
17.3	130
19.7	140



This document has no contractual value. Description and photos may contain and/or show optional equipment.

SVP Yachts reserves the right to change specifications, dimensions, data and design features.



SVP
YACHTS
PROUDLY
PRODUCES


GREENLINE
YACHTS


SHIPMAN
Carbon Yachts

SVP Yachts, Zapuže 10a, 4275 Begunje, Slovenia